

# Phospho-PKC delta-Y311 Rabbit pAb

Catalog No.: AP0496

## Basic Information

### Observed MW

78kDa

### Calculated MW

78kDa

### Category

Primary antibody

### Applications

ELISA, WB

### Cross-Reactivity

Human, Mouse

## Background

The protein encoded by this gene is a member of the protein kinase C family of serine- and threonine-specific protein kinases. The encoded protein is activated by diacylglycerol and is both a tumor suppressor and a positive regulator of cell cycle progression. Also, this protein can positively or negatively regulate apoptosis. Defects in this gene are a cause of autoimmune lymphoproliferative syndrome.

## Recommended Dilutions

WB 1:500 - 1:2000

## Immunogen Information

### Gene ID

5580

### Swiss Prot

Q05655

### Immunogen

A synthetic phosphorylated peptide around Y311 of rat PKC delta (NP\_579841.1).

### Synonyms

MAY1; PKCD; ALPS3; CVID9; nPKC-delta; Phospho-PKC delta-Y311

## Contact

☎ | 400-999-6126

✉ | [cn.market@abclonal.com.cn](mailto:cn.market@abclonal.com.cn)

🌐 | [www.abclonal.com.cn](http://www.abclonal.com.cn)

## Product Information

### Source

Rabbit

### Isotype

IgG

### Purification

Affinity purification

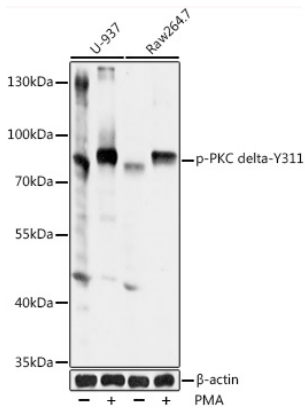
### Storage

Store at -20°C. Avoid freeze / thaw cycles.

Buffer: PBS with 0.02% sodium azide, 50% glycerol, pH7.3.

## Validation Data

---



Western blot analysis of lysates from U937 and Raw264.7 cells, using Phospho-PKC delta-Y311 Rabbit pAb (AP0496) at 1:1000 dilution. U-937 cells were treated by PMA/TPA (200nM) for 30 minutes. RAW 264.7 cells were treated by PMA (200 nM) for 30 minutes .  
Secondary antibody: HRP-conjugated Goat anti-Rabbit IgG (H+L) (AS014) at 1:10000 dilution.  
Lysates/proteins: 25µg per lane.  
Blocking buffer: 3% BSA.  
Detection: ECL Basic Kit (RM00020).  
Exposure time: 60s.