

Phospho-Fyn-S21 Rabbit pAb

Catalog No.: AP0510 **2 Publications**

Basic Information

Observed MW

60kDa

Calculated MW

61kDa

Category

Primary antibody

Applications

ELISA, WB

Cross-Reactivity

Human

Background

This gene is a member of the protein-tyrosine kinase oncogene family. It encodes a membrane-associated tyrosine kinase that has been implicated in the control of cell growth. The protein associates with the p85 subunit of phosphatidylinositol 3-kinase and interacts with the fyn-binding protein. Alternatively spliced transcript variants encoding distinct isoforms exist.

Recommended Dilutions

WB 1:500 - 1:2000

Immunogen Information

Gene ID

2534

Swiss Prot

P06241

Immunogen

A synthetic phosphorylated peptide around S21 of human Phospho-Fyn-S21 (NP_002028.1).

Synonyms

SLK; SYN; p59-FYN; Phospho-Fyn-S21

Contact

☎ | 400-999-6126

✉ | cn.market@abclonal.com.cn

🌐 | www.abclonal.com.cn

Product Information

Source

Rabbit

Isotype

IgG

Purification

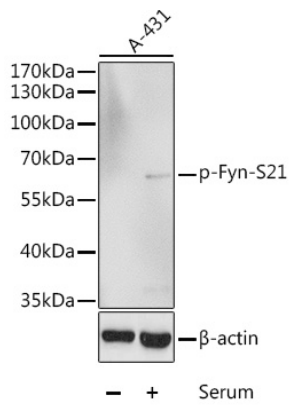
Affinity purification

Storage

Store at -20°C. Avoid freeze / thaw cycles.

Buffer: PBS with 0.02% sodium azide, 50% glycerol, pH 7.3.

Validation Data



Western blot analysis of lysates from A-431 cells, using Phospho-Fyn-S21 Rabbit pAb (AP0510) at 1:1000 dilution. A-431 cells were treated by 10% FBS after serum-starvation overnight.
Secondary antibody: HRP-conjugated Goat anti-Rabbit IgG (H+L) (AS014) at 1:10000 dilution.
Lysates/proteins: 25 μ g per lane.
Blocking buffer: 3% BSA.