

Phospho-SRC Family-Y416 Rabbit pAb

Catalog No.: AP0511 **4 Publications**

Basic Information

Observed MW

61kDa

Calculated MW

54kDa/60kDa/40kDa/58kDa/61kDa

Category

Primary antibody

Applications

WB,ELISA

Cross-Reactivity

Human, Mouse, Rat

Background

This gene is a member of the protein-tyrosine kinase oncogene family. It encodes a membrane-associated tyrosine kinase that has been implicated in the control of cell growth. The protein associates with the p85 subunit of phosphatidylinositol 3-kinase and interacts with the fyn-binding protein. Alternatively spliced transcript variants encoding distinct isoforms exist. [provided by RefSeq, Jul 2008]

Recommended Dilutions

WB 1:500 - 1:2000

ELISA Recommended starting concentration is 1 µg/mL. Please optimize the concentration based on your specific assay requirements.

Immunogen Information

Gene ID

2534/3055/3932/4067/6714/7525

Swiss Prot

P06241/P08631/P06239/P07948/P12931/P07947

Immunogen

Synthetic peptide. This information is considered to be commercially sensitive.

Synonyms

ASV; SRC1; THC6; c-SRC; p60-Src; SRC; Phospho-SRC Family-Y416

Contact

☎ | 400-999-6126

✉ | cn.market@abclonal.com.cn

🌐 | www.abclonal.com.cn

Product Information

Source

Rabbit

Isotype

IgG

Purification

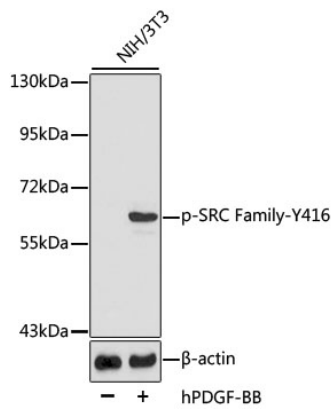
Affinity purification

Storage

Store at -20°C. Avoid freeze / thaw cycles.

Buffer: PBS with 0.02% sodium azide,50% glycerol,pH7.3.

Validation Data



Western blot analysis of lysates from NIH3T3 cells, using Phospho-SRC Family-Y416 Rabbit pAb (AP0511).
Secondary antibody: HRP-conjugated Goat anti-Rabbit IgG (H+L) (AS014) at 1:10000 dilution.
Lysates/proteins: 25µg per lane.
Blocking buffer: 3% BSA.