

Phospho-HER2/ErbB2-Y1221/1222 Rabbit pAb

Catalog No.: AP0527 **1 Publications**

Basic Information

Observed MW

185kDa

Calculated MW

138kDa

Category

Primary antibody

Applications

ELISA,WB

Cross-Reactivity

Human

Background

This gene encodes a member of the epidermal growth factor (EGF) receptor family of receptor tyrosine kinases. This protein has no ligand binding domain of its own and therefore cannot bind growth factors. However, it does bind tightly to other ligand-bound EGF receptor family members to form a heterodimer, stabilizing ligand binding and enhancing kinase-mediated activation of downstream signalling pathways, such as those involving mitogen-activated protein kinase and phosphatidylinositol-3 kinase. Allelic variations at amino acid positions 654 and 655 of isoform a (positions 624 and 625 of isoform b) have been reported, with the most common allele, Ile654/Ile655, shown here. Amplification and/or overexpression of this gene has been reported in numerous cancers, including breast and ovarian tumors. Alternative splicing results in several additional transcript variants, some encoding different isoforms and others that have not been fully characterized.

Recommended Dilutions

WB 1:500 - 1:1000

Immunogen Information

Gene ID

2064

Swiss Prot

P04626

Immunogen

A synthetic phosphorylated peptide around Y1221 & Y1222 of human HER2/ERBB2 (NP_004439.2).

Synonyms

NEU; NGL; HER2; TKR1; CD340; HER-2; VSCN2; MLN 19; MLN-19; c-ERB2; c-ERB-2; HER-2/neu; p185(erbB2); Phospho-HER2/ErbB2-Y1221/1222

Contact

☎ | 400-999-6126

✉ | cn.market@abclonal.com.cn

🌐 | www.abclonal.com.cn

Product Information

Source

Rabbit

Isotype

IgG

Purification

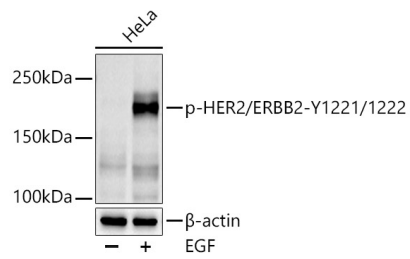
Affinity purification

Storage

Store at -20°C. Avoid freeze / thaw cycles.

Buffer: PBS with 0.05% proclin300,50% glycerol,pH7.3.

Validation Data



Western blot analysis of lysates from HeLa cells, using Phospho-HER2/ErbB2-Y1221/1222 Rabbit pAb (AP0527) at 1:1000 dilution. HeLa cells were treated by EGF (100 ng/ml) at 37°C for 30 minutes after serum-starvation overnight.
Secondary antibody: HRP-conjugated Goat anti-Rabbit IgG (H+L) (AS014) at 1:10000 dilution.
Lysates/proteins: 25µg per lane.
Blocking buffer: 3% nonfat dry milk in TBST.
Detection: ECL Basic Kit (RM00020).
Exposure time: 30s.