

# Phospho-FAK-Y576/577 Rabbit pAb

Catalog No.: AP0536

## Basic Information

### Observed MW

130kDa

### Calculated MW

119kDa

### Category

Primary antibody

### Applications

ELISA, WB

### Cross-Reactivity

Human

## Background

This gene encodes a cytoplasmic protein tyrosine kinase which is found concentrated in the focal adhesions that form between cells growing in the presence of extracellular matrix constituents. The encoded protein is a member of the FAK subfamily of protein tyrosine kinases but lacks significant sequence similarity to kinases from other subfamilies. Activation of this gene may be an important early step in cell growth and intracellular signal transduction pathways triggered in response to certain neural peptides or to cell interactions with the extracellular matrix. Several transcript variants encoding different isoforms have been found for this gene.

## Recommended Dilutions

WB 1:500 - 1:2000

## Immunogen Information

### Gene ID

5747

### Swiss Prot

Q05397

### Immunogen

A synthetic phosphorylated peptide around Y576 & Y577 of human PTK2 (NP\_722560.1).

### Synonyms

FAK; FADK; FAK1; FRNK; FADK 1; PPP1R71; p125FAK; pp125FAK; Phospho-FAK-Y576/577

## Contact

☎ | 400-999-6126

✉ | [cn.market@abclonal.com.cn](mailto:cn.market@abclonal.com.cn)

🌐 | [www.abclonal.com.cn](http://www.abclonal.com.cn)

## Product Information

### Source

Rabbit

### Isotype

IgG

### Purification

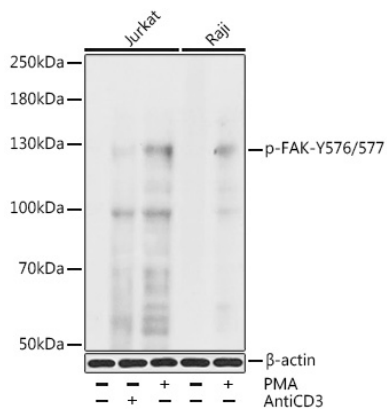
Affinity purification

### Storage

Store at -20°C. Avoid freeze / thaw cycles.

Buffer: PBS with 0.02% sodium azide, 50% glycerol, pH7.3.

## Validation Data



Western blot analysis of various lysates, using Phospho-FAK-Y576/577 Rabbit pAb (AP0536) at 1:1000 dilution. Jurkat cells were treated by CD-3 (10 µg/mL) for 2 minutes after serum-starvation overnight or treated by PMA/TPA (200nM) for 10 minutes. Raji cells were treated by PMA/TPA (200nM) for 30 minutes. Secondary antibody: HRP-conjugated Goat anti-Rabbit IgG (H+L) (AS014) at 1:10000 dilution. Lysates/proteins: 25µg per lane. Blocking buffer: 3% BSA. Detection: ECL Basic Kit (RM00020). Exposure time: 90s.