

Phospho-p90Rsk/RSK1/RPS6KA1-T359/S363 Rabbit pAb www.abclonal.com

Catalog No.: AP0539 **5 Publications**

Basic Information

Observed MW

83kDa

Calculated MW

83kDa

Category

Primary antibody

Applications

ELISA, WB

Cross-Reactivity

Human

Background

This gene encodes a member of the RSK (ribosomal S6 kinase) family of serine/threonine kinases. This kinase contains 2 nonidentical kinase catalytic domains and phosphorylates various substrates, including members of the mitogen-activated kinase (MAPK) signalling pathway. The activity of this protein has been implicated in controlling cell growth and differentiation. Alternate transcriptional splice variants, encoding different isoforms, have been characterized.

Recommended Dilutions

WB 1:500 - 1:2000

Immunogen Information

Gene ID

6195

Swiss Prot

Q15418

Immunogen

A synthetic phosphorylated peptide around T359 & S363 of human p90Rsk/RSK1/RPS6KA1 (NP_002944.2).

Synonyms

RSK; HU-1; RSK1; p90Rsk; MAPKAPK1; MAPKAPK1A; Phospho-p90Rsk/RSK1/RPS6KA1-T359/S363

Contact

 | 400-999-6126

 | cn.market@abclonal.com.cn

 | www.abclonal.com.cn

Product Information

Source

Rabbit

Isotype

IgG

Purification

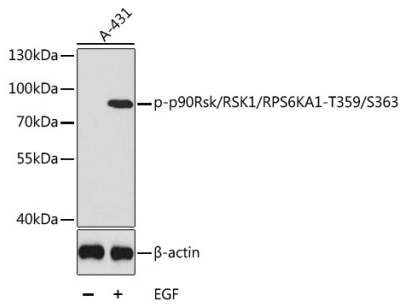
Affinity purification

Storage

Store at -20°C. Avoid freeze / thaw cycles.

Buffer: PBS with 0.02% sodium azide, 50% glycerol, pH7.3.

Validation Data



Western blot analysis of extracts of A431 cells, using Phospho-p90Rsk/RSK1/RPS6KA1-T359/S363 antibody (AP0539).

Secondary antibody: HRP Goat Anti-Rabbit IgG (H+L) (AS014) at 1:10000 dilution.

Lysates/proteins: 25µg per lane.

Blocking buffer: 3% BSA.