

Phospho-IRS1-S307(Human Specific) Rabbit pAb

Catalog No.: AP0552 **9 Publications**

Basic Information

Observed MW

180kDa

Calculated MW

132kDa

Category

Primary antibody

Applications

WB,IHC-P,ELISA

Cross-Reactivity

Human, Mouse, Rat

Background

This gene encodes a protein which is phosphorylated by insulin receptor tyrosine kinase. Mutations in this gene are associated with type II diabetes and susceptibility to insulin resistance.

Recommended Dilutions

WB 1:500 - 1:1000

IHC-P 1:1000 - 1:5000

ELISA Recommended starting concentration is 1 µg/mL. Please optimize the concentration based on your specific assay requirements.

Immunogen Information

Gene ID

3667

Swiss Prot

P35568

Immunogen

A synthetic phosphorylated peptide around S307 of human IRS1 (NP_005535.1).

Synonyms

HIRS-1; Phospho-IRS1-S307(Human Specific)

Contact

 | 400-999-6126

 | cn.market@abclonal.com.cn

 | www.abclonal.com.cn

Product Information

Source

Rabbit

Isotype

IgG

Purification

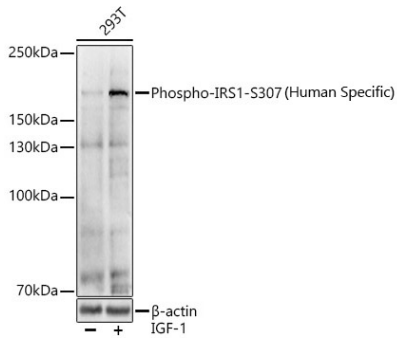
Affinity purification

Storage

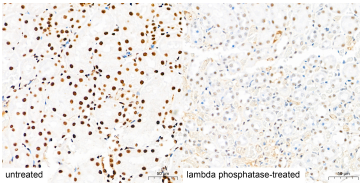
Store at -20°C. Avoid freeze / thaw cycles.

Buffer: PBS with 0.09% Sodium azide,50% glycerol,pH7.3.

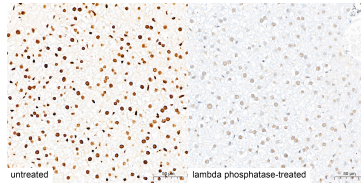
Validation Data



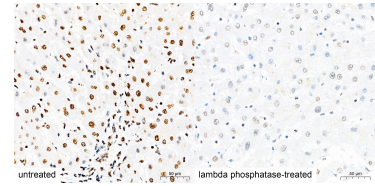
Western blot analysis of various lysates using Phospho-IRS1-S307(Human Specific) Rabbit pAb (AP0552) at 1:1000 dilution. 293T cells were treated by IGF-1 (50 ng/ml) at 37°C for 5 minutes after serum-starvation overnight.
Secondary antibody: HRP-conjugated Goat anti-Rabbit IgG (H+L) (AS014) at 1:10000 dilution.
Lysates/proteins: 25µg per lane.
Blocking buffer: 3% nonfat dry milk in TBST.
Detection: ECL Basic Kit (RM00020).
Exposure time: 30s.



Immunohistochemistry analysis of paraffin-embedded Rat kidney tissue using Phospho-IRS1-S307(Human Specific) Rabbit pAb (AP0552) at a dilution of 1:1600 (40x lens). High pressure antigen retrieval performed with 0.01M Citrate Buffer(pH 6.0) prior to IHC staining.



Immunohistochemistry analysis of paraffin-embedded Mouse liver tissue using Phospho-IRS1-S307(Human Specific) Rabbit pAb (AP0552) at a dilution of 1:1600 (40x lens). High pressure antigen retrieval performed with 0.01M Citrate Buffer(pH 6.0) prior to IHC staining.



Immunohistochemistry analysis of paraffin-embedded Human liver tissue using Phospho-IRS1-S307(Human Specific) Rabbit pAb (AP0552) at a dilution of 1:1600 (40x lens). High pressure antigen retrieval performed with 0.01M Citrate Buffer(pH 6.0) prior to IHC staining.