

Phospho-PKC alpha-S226 Rabbit pAb

Catalog No.: AP0559 **1 Publications**

Basic Information

Observed MW

80kDa

Calculated MW

77kDa

Category

Primary antibody

Applications

ELISA, WB

Cross-Reactivity

Human, Mouse, Rat

Background

Protein kinase C (PKC) is a family of serine- and threonine-specific protein kinases that can be activated by calcium and the second messenger diacylglycerol. PKC family members phosphorylate a wide variety of protein targets and are known to be involved in diverse cellular signaling pathways. PKC family members also serve as major receptors for phorbol esters, a class of tumor promoters. Each member of the PKC family has a specific expression profile and is believed to play a distinct role in cells. The protein encoded by this gene is one of the PKC family members. This kinase has been reported to play roles in many different cellular processes, such as cell adhesion, cell transformation, cell cycle checkpoint, and cell volume control. Knockout studies in mice suggest that this kinase may be a fundamental regulator of cardiac contractility and Ca(2+) handling in myocytes.

Recommended Dilutions

WB 1:500 - 1:2000

Immunogen Information

Gene ID

5578

Swiss Prot

P17252

Immunogen

A synthetic phosphorylated peptide around S226 of human PKC alpha (NP_002728.2).

Synonyms

AAG6; PKCA; PRKACA; PKCI+/-; PKCalpha; PKC-alpha; Phospho-PKC alpha-S226

Contact

☎ | 400-999-6126

✉ | cn.market@abclonal.com.cn

🌐 | www.abclonal.com.cn

Product Information

Source

Rabbit

Isotype

IgG

Purification

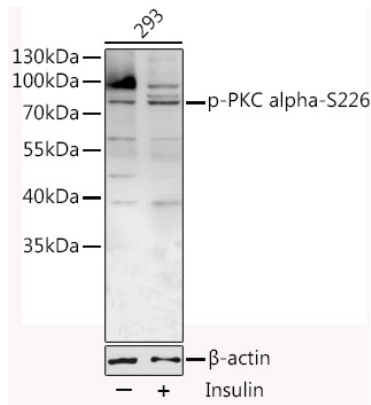
Affinity purification

Storage

Store at -20°C. Avoid freeze / thaw cycles.

Buffer: PBS with 0.02% sodium azide, 50% glycerol, pH7.3.

Validation Data



Western blot analysis of lysates from 293 cells, using Phospho-PKC alpha-S226 Rabbit pAb (AP0559) at 1:1000 dilution. 293T cells were treated by Insulin (100nM) for 10 minutes after serum-starvation overnight.
Secondary antibody: HRP Goat Anti-Rabbit IgG (H+L) (AS014) at 1:10000 dilution.
Lysates/proteins: 25µg per lane.
Blocking buffer: 3% BSA.