

Phospho-Ret-Y905 Rabbit pAb

Catalog No.: AP0600

Basic Information

Observed MW

124kDa

Calculated MW

124kDa

Category

Primary antibody

Applications

ELISA, WB

Cross-Reactivity

Human

Background

This gene encodes a transmembrane receptor and member of the tyrosine protein kinase family of proteins. Binding of ligands such as GDNF (glial cell-line derived neurotrophic factor) and other related proteins to the encoded receptor stimulates receptor dimerization and activation of downstream signaling pathways that play a role in cell differentiation, growth, migration and survival. The encoded receptor is important in development of the nervous system, and the development of organs and tissues derived from the neural crest. This proto-oncogene can undergo oncogenic activation through both cytogenetic rearrangement and activating point mutations. Mutations in this gene are associated with Hirschsprung disease and central hypoventilation syndrome and have been identified in patients with renal agenesis.

Recommended Dilutions

WB 1:500 - 1:2000

Immunogen Information

Gene ID

5979

Swiss Prot

P07949

Immunogen

A synthetic phosphorylated peptide around Y905 of human Ret (NP_066124.1).

Synonyms

PTC; MTC1; HSCR1; MEN2A; MEN2B; CDHF12; CDHR16; RET-ELE1; Phospho-Ret-Y905

Contact

☎ | 400-999-6126

✉ | cn.market@abclonal.com.cn

🌐 | www.abclonal.com.cn

Product Information

Source

Rabbit

Isotype

IgG

Purification

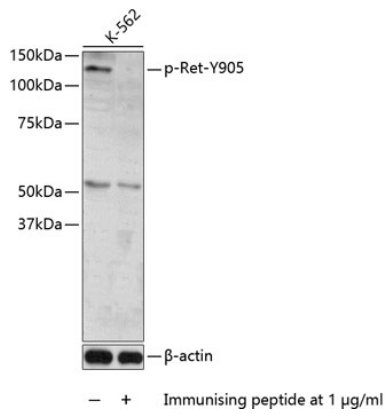
Affinity purification

Storage

Store at -20°C. Avoid freeze / thaw cycles.

Buffer: PBS with 0.02% sodium azide, 50% glycerol, pH7.3.

Validation Data



Western blot analysis of extracts of K562 cells, using Phospho-Ret-Y905 antibody (AP0600).
Secondary antibody: HRP Goat Anti-Rabbit IgG (H+L) (AS014) at 1:10000 dilution.
Lysates/proteins: 25µg per lane.
Blocking buffer: 3% BSA.