

Phospho-PDGFR alpha-Y1018 Rabbit pAb

Catalog No.: AP0615

Basic Information

Observed MW

200kDa

Calculated MW

123kDa

Category

Primary antibody

Applications

ELISA, WB

Cross-Reactivity

Human

Background

This gene encodes a cell surface tyrosine kinase receptor for members of the platelet-derived growth factor family. These growth factors are mitogens for cells of mesenchymal origin. The identity of the growth factor bound to a receptor monomer determines whether the functional receptor is a homodimer or a heterodimer, composed of both platelet-derived growth factor receptor alpha and beta polypeptides. Studies suggest that this gene plays a role in organ development, wound healing, and tumor progression. Mutations in this gene have been associated with idiopathic hypereosinophilic syndrome, somatic and familial gastrointestinal stromal tumors, and a variety of other cancers.

Recommended Dilutions

WB 1:500 - 1:2000

Immunogen Information

Gene ID

5156

Swiss Prot

P16234

Immunogen

A synthetic phosphorylated peptide around Y1018 of human PDGFRA (NP_006197.1).

Synonyms

CD140A; PDGFR2; PDGFR-2; Phospho-PDGFR alpha-Y1018

Contact

☎ | 400-999-6126

✉ | cn.market@abclonal.com.cn

🌐 | www.abclonal.com.cn

Product Information

Source

Rabbit

Isotype

IgG

Purification

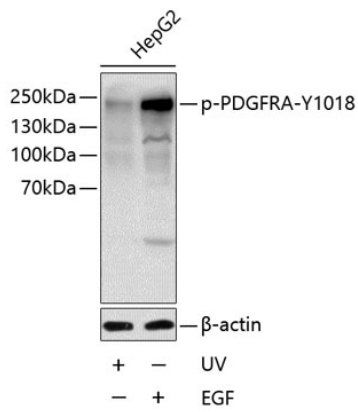
Affinity purification

Storage

Store at -20°C. Avoid freeze / thaw cycles.

Buffer: PBS with 0.02% sodium azide, 50% glycerol, pH7.3.

Validation Data



Western blot analysis of lysates from HepG2 cells, using Phospho-PDGFR alpha-Y1018 Rabbit pAb (AP0615) at 1:1000 dilution. HepG2 cells were treated by UV for 15-30 minutes or treated by EGF (100ng/mL) for 30 minutes after serum-starvation overnight. Secondary antibody: HRP-conjugated Goat anti-Rabbit IgG (H+L) (AS014) at 1:10000 dilution. Lysates/proteins: 25µg per lane. Blocking buffer: 3% BSA.