

Phospho-DNA-PKcs-S2056 Rabbit pAb

Catalog No.: AP0621 **4 Publications**

Basic Information

Observed MW

469kDa

Calculated MW

469kDa

Category

Primary antibody

Applications

WB, IHC-P, IF/ICC, ELISA

Cross-Reactivity

Human

Background

This gene encodes the catalytic subunit of the DNA-dependent protein kinase (DNA-PK). It functions with the Ku70/Ku80 heterodimer protein in DNA double strand break repair and recombination. The protein encoded is a member of the PI3/PI4-kinase family.

Recommended Dilutions

WB 1:500 - 1:2000

IHC-P 1:100 - 1:500

IF/ICC 1:50 - 1:200

ELISA Recommended starting concentration is 1 µg/mL. Please optimize the concentration based on your specific assay requirements.

Immunogen Information

Gene ID

5591

Swiss Prot

P78527

Immunogen

A synthetic phosphorylated peptide around S2056 of human DNA-PKcs (NP_008835.5).

Synonyms

HYRC; p350; DNAPK; DNPk1; HYRC1; IMD26; XRCC7; DNAPKc; DNA-PKC; DNA-PKcs; Phospho-DNA-PKcs-S2056

Contact

☎ | 400-999-6126

✉ | cn.market@abclonal.com.cn

🌐 | www.abclonal.com.cn

Product Information

Source

Rabbit

Isotype

IgG

Purification

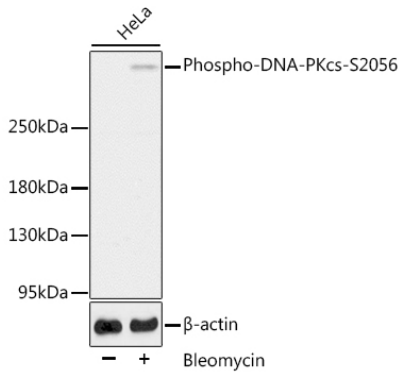
Affinity purification

Storage

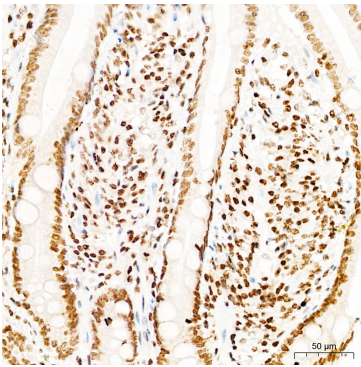
Store at -20°C. Avoid freeze / thaw cycles.

Buffer: PBS with 0.09% Sodium azide, 50% glycerol, pH7.3.

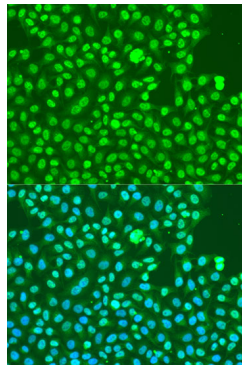
Validation Data



Western blot analysis of lysates from HeLa cells, using Phospho-DNA-PKcs-S2056 Rabbit pAb (AP0621).
Secondary antibody: HRP-conjugated Goat anti-Rabbit IgG (H+L) (AS014) at 1:10000 dilution.
Lysates/proteins: 25µg per lane.
Blocking buffer: 3% BSA.



Immunohistochemistry analysis of paraffin-embedded Human small intestine tissue using Phospho-DNA-PKcs-S2056 Rabbit pAb (AP0621) at a dilution of 1:300 (40x lens). High pressure antigen retrieval was performed with 0.01 M citrate buffer (pH 6.0) prior to IHC staining.



Immunofluorescence analysis of U2OS cells using Phospho-DNA-PKcs-S2056 Rabbit pAb (AP0621) at dilution of 1:100. Secondary antibody: Cy3-conjugated Goat anti-Rabbit IgG (H+L) (AS007) at 1:500 dilution. Blue: DAPI for nuclear staining.