

Phospho-PKR/EIF2AK2-T446 Rabbit mAb

Catalog No.: AP0632 **Recombinant** **1 Publications**

Basic Information

Observed MW

62kDa

Calculated MW

62kDa

Category

Primary antibody

Applications

ELISA, WB, IHC-P, IF/ICC, IP

Cross-Reactivity

Human

Background

The protein encoded by this gene is a serine/threonine protein kinase that is activated by autophosphorylation after binding to dsRNA. The activated form of the encoded protein can phosphorylate translation initiation factor EIF2S1, which in turn inhibits protein synthesis. This protein is also activated by manganese ions and heparin. The encoded protein plays an important role in the innate immune response against multiple DNA and RNA viruses.

Recommended Dilutions

WB	1:500 - 1:2000
IHC-P	1:50 - 1:200
IF/ICC	1:50 - 1:200
IP	1:20 - 1:50

Immunogen Information

Gene ID

5610

Swiss Prot

P19525

Immunogen

A phospho specific peptide corresponding to residues surrounding T446 of human PKR/EIF2AK2

Synonyms

PKR; PRKR; DYT33; LEUDEN; EIF2AK1; PPP1R83; Phospho-PKR/EIF2AK2-T446

Contact

 | 400-999-6126 | cn.market@abclonal.com.cn | www.abclonal.com.cn

Product Information

Source

Rabbit

Isotype

IgG

Purification

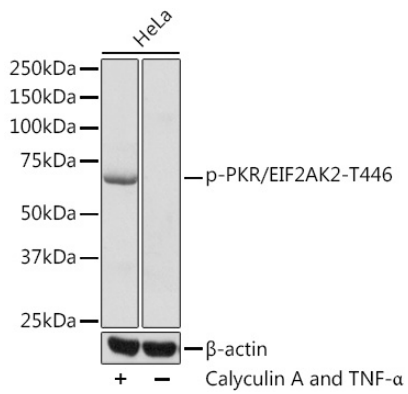
Affinity purification

Storage

Store at -20°C. Avoid freeze / thaw cycles.

Buffer: PBS with 0.02% sodium azide, 50% glycerol, pH7.3.

Validation Data



Western blot analysis of lysates from HeLa cells, using Phospho-PKR/EIF2AK2-T446 Rabbit mAb (AP0632). HeLa cells were treated by TNF- α (20 ng/mL) and Calyculin A (100 nM) at 37°C for 10 minutes. Secondary antibody: HRP Goat Anti-Rabbit IgG (H+L) (AS014) at 1:10000 dilution. Lysates/proteins: 25 μ g per lane. Blocking buffer: 3% BSA.