

Phospho-ATR-S428 Rabbit pAb

Catalog No.: AP0676SP **6 Publications**

Basic Information

Observed MW

300 kDa

Calculated MW

294 kDa/ 297 kDa/301 kDa

Category

Primary antibody

Applications

WB, ELISA

Cross-Reactivity

Human, Mouse

Background

The protein encoded by this gene is a serine/threonine kinase and DNA damage sensor, activating cell cycle checkpoint signaling upon DNA stress. The encoded protein can phosphorylate and activate several proteins involved in the inhibition of DNA replication and mitosis, and can promote DNA repair, recombination, and apoptosis. This protein is also important for fragile site stability and centrosome duplication. Defects in this gene are a cause of Seckel syndrome 1.

Recommended Dilutions

WB 1:1000 - 1:4000

ELISA Recommended starting concentration is 1 µg/mL. Please optimize the concentration based on your specific assay requirements. For high-ratio antibody dilutions ($\geq 1:10000$) a sequential dilution method is strongly recommended to ensure measurement accuracy.

Immunogen Information

Gene ID

545

Swiss Prot

Q13535

Immunogen

This information is considered to be commercially sensitive.

Synonyms

FRP1; MEC1; SCKL; FCTCS; SCKL1; Phospho-ATR-S428

Contact

 | 400-999-6126

 | cn.market@abclonal.com.cn

 | www.abclonal.com.cn

Product Information

Source

Rabbit

Isotype

IgG

Purification

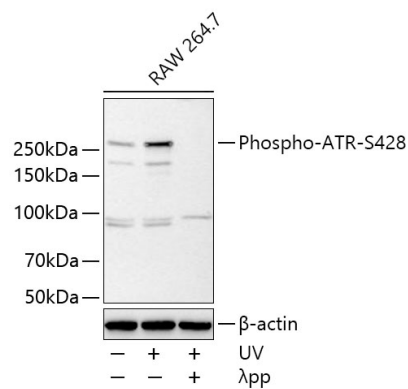
Affinity purification

Storage

Store at -20°C. Avoid freeze / thaw cycles.

Buffer: PBS, pH 7.3, containing 50% glycerol. Preserved with Proclin300 or sodium azide. May contain 0.05% BSA as specified on the Certificate of Analysis.

Validation Data



Western blot analysis of various lysates using Phospho-ATR-S428 Rabbit pAb (AP0676SP) at 1:4000 dilution incubated at room temperature for 1.5 hours. RAW 264.7 cells were treated with UV (120 mJ) at 37°C for 40 minutes, RAW 264.7 cells were treated with UV (120 mJ) at 37°C for 40 minutes and were treated with λ pp (200 U) at 30°C for 1 hours.

Secondary antibody: HRP-conjugated Goat anti-Rabbit IgG (H+L) (AS014) at 1:10000 dilution.

Lysates/proteins: 30 μ g per lane.

Blocking buffer: 3% nonfat dry milk in TBST.

Detection: ECL Basic Kit (RM00020).

Exposure time: 90 s.