

# Phospho-Smad3-S423/S425 Rabbit mAb

Catalog No.: AP0727

Recombinant

45 Publications

## Basic Information

**Observed MW**

52 kDa

**Calculated MW**

48 kDa

**Category**

Primary antibody

**Applications**

WB, IHC-P, ELISA

**Cross-Reactivity**

Human, Mouse, Rat

**CloneNo number**

ARC0170

## Background

The SMAD family of proteins are a group of intracellular signal transducer proteins similar to the gene products of the Drosophila gene 'mothers against decapentaplegic' (Mad) and the C. elegans gene Sma. The SMAD3 protein functions in the transforming growth factor-beta signaling pathway, and transmits signals from the cell surface to the nucleus, regulating gene activity and cell proliferation. This protein forms a complex with other SMAD proteins and binds DNA, functioning both as a transcription factor and tumor suppressor. Mutations in this gene are associated with aneurysms-osteoarthritis syndrome and Loeys-Dietz Syndrome 3.

## Recommended Dilutions

**WB** 1:1000 - 1:3000**IHC-P** 1:50 - 1:200

**ELISA** Recommended starting concentration is 1 µg/mL. Please optimize the concentration based on your specific assay requirements.

## Immunogen Information

**Gene ID**

4088

**Swiss Prot**

P84022

**Immunogen**

Synthetic peptide. This information is considered to be commercially sensitive.

**Synonyms**

LDS3; mad3; LDS1C; MADH3; JV15-2; hMAD-3; hSMAD3; HSPC193; HsT17436; Phospho-Smad3-S423/S425

## Contact

 | 400-999-6126 | [cn.market@abclonal.com.cn](mailto:cn.market@abclonal.com.cn) | [www.abclonal.com.cn](http://www.abclonal.com.cn)

## Product Information

**Source**

Rabbit

**Isotype**

IgG

**Purification**

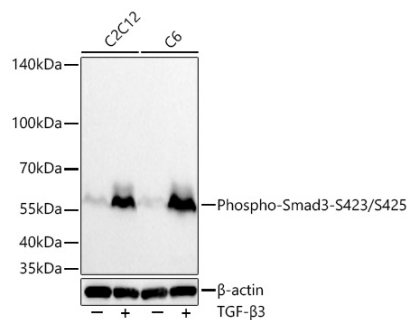
Affinity purification

**Storage**

Store at -20°C. Avoid freeze / thaw cycles.

Buffer: PBS with 0.09% sodium azide, 0.05% BSA, 50% glycerol, pH7.3.

## Validation Data



Western blot analysis of various lysates using Phospho-Smad3-S423/S425 Rabbit mAb (AP0727) at 1:1000 dilution incubated overnight at 4°C. C2C12 cells and C6 cells were treated with TGF- $\beta$ 3 (50 ng/mL) at 37°C for 30 minutes.

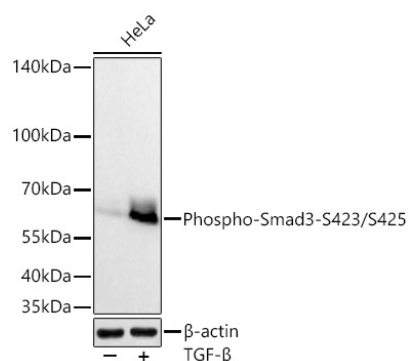
Secondary antibody: HRP-conjugated Goat anti-Rabbit IgG (H+L) (AS014) at 1:10000 dilution.

Lysates/proteins: 25  $\mu$ g per lane.

Blocking buffer: 3% nonfat dry milk in TBST.

Detection: ECL Basic Kit (RM00020).

Exposure time: 20 s.



Western blot analysis of lysates from HeLa cells using Phospho-Smad3-S423/S425 Rabbit mAb (AP0727) at 1:1000 dilution incubated overnight at 4°C. HeLa cells were treated with TGF- $\beta$  (50 ng/mL) at 37°C for 30 minutes.

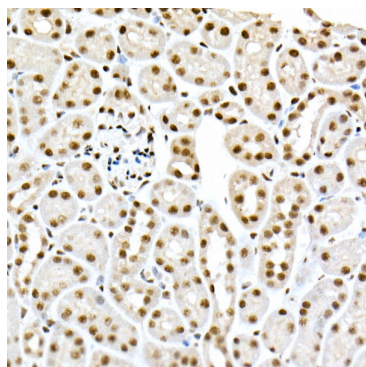
Secondary antibody: HRP-conjugated Goat anti-Rabbit IgG (H+L) (AS014) at 1:10000 dilution.

Lysates/proteins: 25  $\mu$ g per lane.

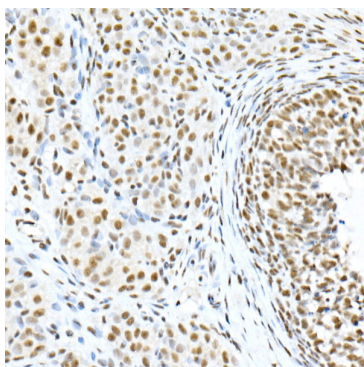
Blocking buffer: 3% nonfat dry milk in TBST.

Detection: ECL Basic Kit (RM00020).

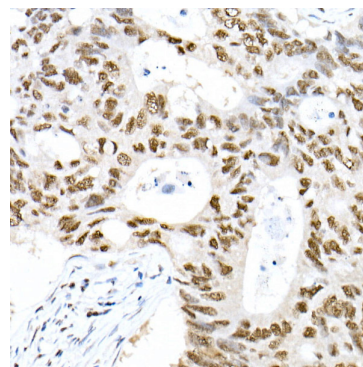
Exposure time: 45 s.



Immunohistochemistry analysis of paraffin-embedded Mouse kidney tissue using Phospho-Smad3-S423/S425 Rabbit mAb (AP0727) at dilution of 1:200 (40x lens). High pressure antigen retrieval performed with 0.01M Citrate buffer (pH 6.0) prior to IHC staining.



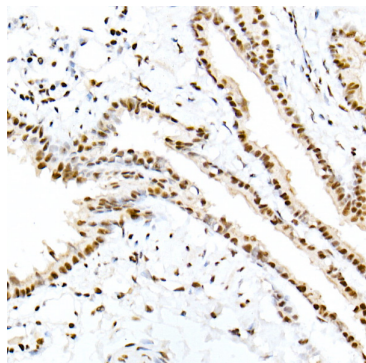
Immunohistochemistry analysis of paraffin-embedded Rat ovary tissue using Phospho-Smad3-S423/S425 Rabbit mAb (AP0727) at dilution of 1:200 (40x lens). High pressure antigen retrieval performed with 0.01M Citrate buffer (pH 6.0) prior to IHC staining.



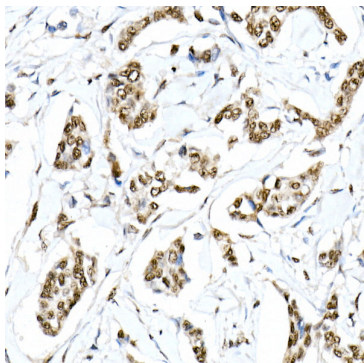
Immunohistochemistry analysis of paraffin-embedded Human colon carcinoma tissue using Phospho-Smad3-S423/S425 Rabbit mAb (AP0727) at dilution of 1:200 (40x lens). High pressure antigen retrieval performed with 0.01M Citrate buffer (pH 6.0) prior to IHC staining.

## Validation Data

---



Immunohistochemistry analysis of paraffin-embedded Rat lung tissue using Phospho-Smad3-S423/S425 Rabbit mAb (AP0727) at dilution of 1:200 (40x lens). High pressure antigen retrieval performed with 0.01M Citrate buffer (pH 6.0) prior to IHC staining.



Immunohistochemistry analysis of paraffin-embedded Human breast cancer tissue using Phospho-Smad3-S423/S425 Rabbit mAb (AP0727) at dilution of 1:200 (40x lens). High pressure antigen retrieval performed with 0.01M Citrate buffer (pH 6.0) prior to IHC staining.