

# Phospho-EIF4B-S422 Rabbit pAb

Catalog No.: AP0775

## Basic Information

### Observed MW

80kDa

### Calculated MW

69kDa

### Category

Primary antibody

### Applications

ELISA, WB

### Cross-Reactivity

Human

## Background

Enables RNA binding activity. Predicted to be involved in eukaryotic translation initiation factor 4F complex assembly and formation of translation preinitiation complex. Located in cytosol. Biomarker of autism spectrum disorder and major depressive disorder.

## Recommended Dilutions

WB 1:500 - 1:2000

## Immunogen Information

### Gene ID

1975

### Swiss Prot

P23588

### Immunogen

A synthetic phosphorylated peptide around S422 of human EIF4B (NP\_001408.2).

### Synonyms

EIF-4B; PRO1843; Phospho-EIF4B-S422

## Contact

☎ | 400-999-6126

✉ | [cn.market@abclonal.com.cn](mailto:cn.market@abclonal.com.cn)

🌐 | [www.abclonal.com.cn](http://www.abclonal.com.cn)

## Product Information

### Source

Rabbit

### Isotype

IgG

### Purification

Affinity purification

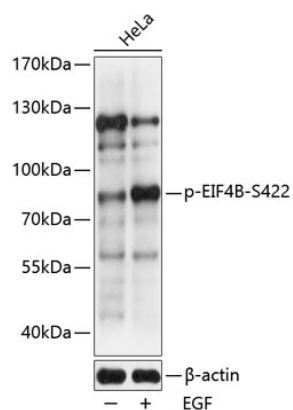
### Storage

Store at -20°C. Avoid freeze / thaw cycles.

Buffer: PBS with 0.01% thimerosal, 50% glycerol, pH7.3.

## Validation Data

---



Western blot analysis of lysates from HeLa cells, using Phospho-EIF4B-S422 Rabbit pAb (AP0775) at 1:2000 dilution. HeLa cells were treated by EGF (100ng/mL) for 30 minutes after serum-starvation overnight.

Secondary antibody: HRP Goat Anti-Rabbit IgG (H+L) (AS014) at 1:10000 dilution.

Lysates/proteins: 25μg per lane.

Blocking buffer: 3% BSA.

Detection: ECL Basic Kit (RM00020).

Exposure time: 60s.