

Phospho-PKC delta-T505 Rabbit pAb

Catalog No.: AP0776 **1 Publications**

Basic Information

Observed MW

77kDa

Calculated MW

78kDa

Category

Primary antibody

Applications

ELISA, WB

Cross-Reactivity

Human

Background

The protein encoded by this gene is a member of the protein kinase C family of serine- and threonine-specific protein kinases. The encoded protein is activated by diacylglycerol and is both a tumor suppressor and a positive regulator of cell cycle progression. Also, this protein can positively or negatively regulate apoptosis. Defects in this gene are a cause of autoimmune lymphoproliferative syndrome.

Recommended Dilutions

WB 1:500 - 1:2000

Immunogen Information

Gene ID

5580

Swiss Prot

Q05655

Immunogen

A synthetic phosphorylated peptide around T505 of human PKC delta (NP_006245.2).

Synonyms

MAY1; PKCD; ALPS3; CVID9; nPKC-delta; Phospho-PKC delta-T505

Contact

 | 400-999-6126

 | cn.market@abclonal.com.cn

 | www.abclonal.com.cn

Product Information

Source

Rabbit

Isotype

IgG

Purification

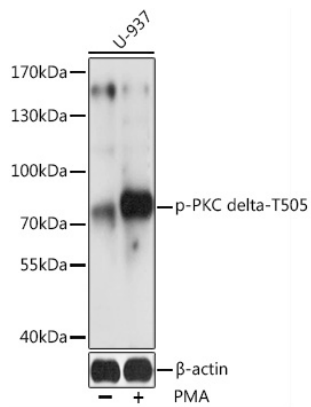
Affinity purification

Storage

Store at -20°C. Avoid freeze / thaw cycles.

Buffer: PBS with 0.01% thimerosal, 50% glycerol, pH7.3.

Validation Data



Western blot analysis of lysates from U-937 cells, using Phospho-PKC delta-T505 Rabbit pAb (AP0776) at 1:2000 dilution. U-937 cells were treated by PMA/TPA (200nM) for 30 minutes.
Secondary antibody: HRP-conjugated Goat anti-Rabbit IgG (H+L) (AS014) at 1:10000 dilution.
Lysates/proteins: 25µg per lane.
Blocking buffer: 3% BSA.
Detection: ECL Basic Kit (RM00020).
Exposure time: 60s.