

Phospho-Lamin A/C-S22 Rabbit pAb

Catalog No.: AP0777

Basic Information

Observed MW

69kDa, 78kDa

Calculated MW

74kDa

Category

Primary antibody

Applications

ELISA, WB, IP

Cross-Reactivity

Human, Rat

Background

The protein encoded by this gene is part of the nuclear lamina, a two-dimensional matrix of proteins located next to the inner nuclear membrane. The lamin family of proteins make up the matrix and are highly conserved in evolution. During mitosis, the lamina matrix is reversibly disassembled as the lamin proteins are phosphorylated. Lamin proteins are thought to be involved in nuclear stability, chromatin structure and gene expression. Vertebrate lamins consist of two types, A and B. Alternative splicing results in multiple transcript variants. Mutations in this gene lead to several diseases: Emery-Dreifuss muscular dystrophy, familial partial lipodystrophy, limb girdle muscular dystrophy, dilated cardiomyopathy, Charcot-Marie-Tooth disease, and Hutchinson-Gilford progeria syndrome.

Recommended Dilutions

WB	1:500 - 1:2000
IP	0.5µg-4µg antibody for 200µg-400µg extracts of whole cells

Immunogen Information

Gene ID	Swiss Prot
4000	P02545

Immunogen

A synthetic phosphorylated peptide around S22 of human Lamin A (NP_005563.1).

Synonyms

FPL; IDC; LFP; CDDC; EMD2; FPLD; HGPS; LDP1; LMN1; LMNC; MADA; PRO1; CDCD1; CMD1A; FPLD2; LMNL1; CMT2B1; LGMD1B; Phospho-Lamin A/C-S22

Contact

	400-999-6126
	cn.market@abclonal.com.cn
	www.abclonal.com.cn

Product Information

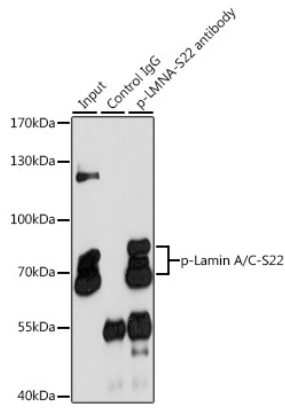
Source	Isotype	Purification
Rabbit	IgG	Affinity purification

Storage

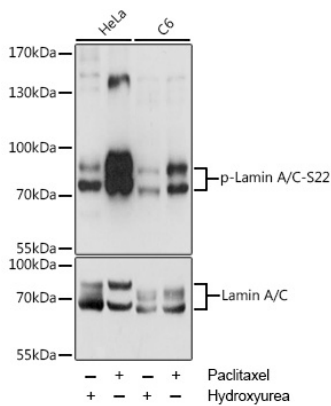
Store at -20°C. Avoid freeze / thaw cycles.

Buffer: PBS with 0.01% thimerosal, 50% glycerol, pH7.3.

Validation Data



Immunoprecipitation analysis of 200 µg extracts of HeLa cells, using 3 µg Phospho-Lamin A/C-S22 pAb (AP0777). Western blot was performed from the immunoprecipitate using Phospho-Lamin A/C-S22 pAb (AP0777) at a dilution of 1:1000. HeLa cells were treated by Paclitaxel (100 nM/mL) at 37°C for 20 hours.



Western blot analysis of various lysates using Phospho-Lamin A/C-S22 Rabbit pAb (AP0777) at 1:2000 dilution or Lamin A antibody (A0249). HeLa cells were treated by Hydroxyurea (4 mM) at 37°C for 20 hours or treated by Paclitaxel (100 nM/mL) at 37°C for 20 hours. C6 cells were treated by Hydroxyurea (4 mM) at 37°C for 20 hours or treated by Paclitaxel (100 nM) at 37°C for 20 hours. Secondary antibody: HRP-conjugated Goat anti-Rabbit IgG (H+L) (AS014) at 1:10000 dilution. Lysates/proteins: 25µg per lane. Blocking buffer: 3% BSA. Detection: ECL Enhanced Kit (RM00021). Exposure time: 1s.