

# Phospho-CBL-Y700 Rabbit pAb

Catalog No.: AP0780

## Basic Information

### Observed MW

120kDa

### Calculated MW

100kDa

### Category

Primary antibody

### Applications

ELISA, WB

### Cross-Reactivity

Human

## Background

This gene is a proto-oncogene that encodes a RING finger E3 ubiquitin ligase. The encoded protein is one of the enzymes required for targeting substrates for degradation by the proteasome. This protein mediates the transfer of ubiquitin from ubiquitin conjugating enzymes (E2) to specific substrates. This protein also contains an N-terminal phosphotyrosine binding domain that allows it to interact with numerous tyrosine-phosphorylated substrates and target them for proteasome degradation. As such it functions as a negative regulator of many signal transduction pathways. This gene has been found to be mutated or translocated in many cancers including acute myeloid leukaemia, and expansion of CGG repeats in the 5' UTR has been associated with Jacobsen syndrome. Mutations in this gene are also the cause of Noonan syndrome-like disorder.

## Recommended Dilutions

WB 1:500 - 1:2000

## Immunogen Information

### Gene ID

867

### Swiss Prot

P22681

### Immunogen

A synthetic phosphorylated peptide around Y700 of human CBL (NP\_005179.2).

### Synonyms

CBL2; NSLL; C-CBL; RNF55; FRA11B; Phospho-CBL-Y700

## Contact

☎ | 400-999-6126

✉ | [cn.market@abclonal.com.cn](mailto:cn.market@abclonal.com.cn)

🌐 | [www.abclonal.com.cn](http://www.abclonal.com.cn)

## Product Information

### Source

Rabbit

### Isotype

IgG

### Purification

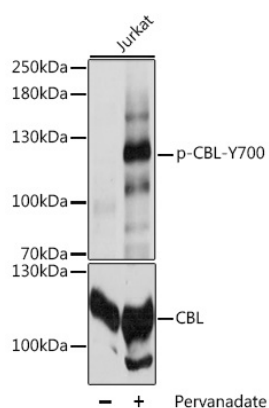
Affinity purification

### Storage

Store at -20°C. Avoid freeze / thaw cycles.

Buffer: PBS with 0.01% thimerosal, 50% glycerol, pH7.3.

## Validation Data



Western blot analysis of lysates from Jurkat cells, using Phospho-CBL-Y700 Rabbit pAb (AP0780) at 1:2000 dilution or CBL antibody (A0732). Jurkat cells were treated by Pervanadate (1 mM) at 37°C for 30 minutes. Secondary antibody: HRP Goat Anti-Rabbit IgG (H+L) (AS014) at 1:10000 dilution.

Lysates/proteins: 25µg per lane.

Blocking buffer: 3% BSA.

Detection: ECL Basic Kit (RM00020).

Exposure time: 5s.