

Phospho-AKT1S1/PRAS40-T246 Rabbit pAb

Catalog No.: AP0793

Basic Information

Observed MW

40kDa

Calculated MW

27kDa

Category

Primary antibody

Applications

ELISA, WB

Cross-Reactivity

Human

Background

AKT1S1 is a proline-rich substrate of AKT (MIM 164730) that binds 14-3-3 protein (see YWHAH, MIM 113508) when phosphorylated (Kovacina et al., 2003 [PubMed 12524439]).

Recommended Dilutions

WB 1:500 - 1:2000

Immunogen Information

Gene ID

84335

Swiss Prot

Q96B36

Immunogen

A synthetic phosphorylated peptide around T246 of human AKT1S1/PRAS40 (NP_001092102.1).

Synonyms

Lobe; PRAS40; Phospho-AKT1S1/PRAS40-T246

Contact

 | 400-999-6126

 | cn.market@abclonal.com.cn

 | www.abclonal.com.cn

Product Information

Source

Rabbit

Isotype

IgG

Purification

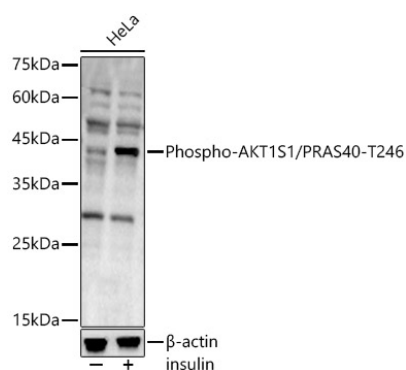
Affinity purification

Storage

Store at -20°C. Avoid freeze / thaw cycles.

Buffer: PBS with 0.01% thimerosal, 50% glycerol, pH7.3.

Validation Data



Western blot analysis of HeLa, using Phospho-AKT1S1/PRAS40-T246 Rabbit pAb (AP0793) at 1:400 dilution. HeLa cells were treated by Insulin (100 nM) at 37°C for 5 minutes after serum-starvation overnight.

Secondary antibody: HRP Goat Anti-Rabbit IgG (H+L) (AS014) at 1:10000 dilution.

Lysates/proteins: 25µg per lane.

Blocking buffer: 3% nonfat dry milk in TBST.

Detection: ECL Enhanced Kit (RM00021).

Exposure time: 45s.