

Phospho-EIF4G1-S1108 Rabbit pAb

Catalog No.: AP0796

Basic Information

Observed MW

250kDa

Calculated MW

175kDa

Category

Primary antibody

Applications

ELISA, WB

Cross-Reactivity

Human, Mouse, Rat

Background

The protein encoded by this gene is a component of the multi-subunit protein complex EIF4F. This complex facilitates the recruitment of mRNA to the ribosome, which is a rate-limiting step during the initiation phase of protein synthesis. The recognition of the mRNA cap and the ATP-dependent unwinding of 5'-terminal secondary structure is catalyzed by factors in this complex. The subunit encoded by this gene is a large scaffolding protein that contains binding sites for other members of the EIF4F complex. A domain at its N-terminus can also interact with the poly(A)-binding protein, which may mediate the circularization of mRNA during translation. Alternative splicing results in multiple transcript variants, some of which are derived from alternative promoter usage.

Recommended Dilutions

WB 1:500 - 1:2000

Immunogen Information

Gene ID

1981

Swiss Prot

Q04637

Immunogen

A synthetic phosphorylated peptide around S1108 of human EIF4G1 (NP_001278086.1).

Synonyms

P220; EIF4F; EIF4G; EIF4GI; PARK18; EIF-4G1; Phospho-EIF4G1-S1108

Contact

☎ | 400-999-6126

✉ | cn.market@abclonal.com.cn

🌐 | www.abclonal.com.cn

Product Information

Source

Rabbit

Isotype

IgG

Purification

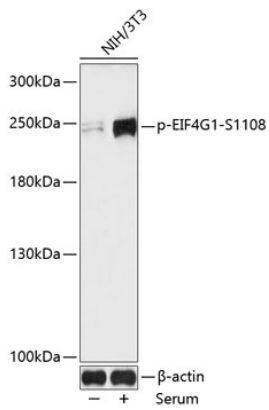
Affinity purification

Storage

Store at -20°C. Avoid freeze / thaw cycles.

Buffer: PBS with 0.01% thimerosal, 50% glycerol, pH7.3.

Validation Data



Western blot analysis of lysates from NIH/3T3 cells, using Phospho-EIF4G1-S1108 Rabbit pAb (AP0796) at 1:1000 dilution. NIH/3T3 cells were treated by 10% FBS for 30 minutes after serum-starvation overnight. Secondary antibody: HRP-conjugated Goat anti-Rabbit IgG (H+L) (AS014) at 1:10000 dilution. Lysates/proteins: 25µg per lane. Blocking buffer: 3% BSA. Detection: ECL Enhanced Kit (RM00021). Exposure time: 60s.