

# Phospho-PRKCQ-T538 Rabbit pAb

**Catalog No.: AP0798**

## Basic Information

**Observed MW**

98kDa

**Calculated MW**

82kDa

**Category**

Primary antibody

**Applications**

ELISA,WB

**Cross-Reactivity**

Human

## Background

Protein kinase C (PKC) is a family of serine- and threonine-specific protein kinases that can be activated by calcium and the second messenger diacylglycerol. PKC family members phosphorylate a wide variety of protein targets and are known to be involved in diverse cellular signaling pathways. PKC family members also serve as major receptors for phorbol esters, a class of tumor promoters. Each member of the PKC family has a specific expression profile and is believed to play a distinct role. The protein encoded by this gene is one of the PKC family members. It is a calcium-independent and phospholipid-dependent protein kinase. This kinase is important for T-cell activation. It is required for the activation of the transcription factors NF-kappaB and AP-1, and may link the T cell receptor (TCR) signaling complex to the activation of the transcription factors.

## Recommended Dilutions

**WB** 1:500 - 1:2000

## Immunogen Information

**Gene ID**

5588

**Swiss Prot**

Q04759

**Immunogen**

A synthetic phosphorylated peptide around T538 of human PRKCQ (NP\_006248.1).

**Synonyms**

PRKCT; nPKC-theta; Phospho-PRKCQ-T538

## Contact

 | 400-999-6126 | [cn.market@abclonal.com.cn](mailto:cn.market@abclonal.com.cn) | [www.abclonal.com.cn](http://www.abclonal.com.cn)

## Product Information

**Source**

Rabbit

**Isotype**

IgG

**Purification**

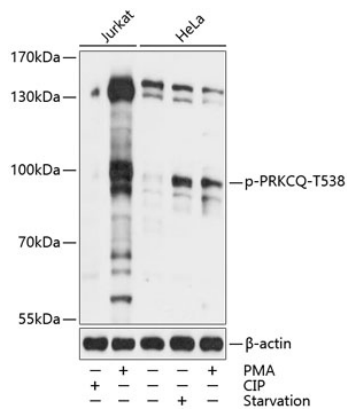
Affinity purification

**Storage**

Store at -20°C. Avoid freeze / thaw cycles.

Buffer: PBS with 0.01% thimerosal, 50% glycerol, pH7.3.

## Validation Data



Western blot analysis of lysates from Jurkat and HeLa cells, using Phospho-PRKCQ-T538 Rabbit pAb (AP0798) at 1:2000 dilution. Jurkat cells were treated by PMA/TPA (200nM) for 10 minutes. HeLa cells were treated by serum-starvation overnight or treated by PMA/TPA (200nM) for 15 minutes after serum-starvation overnight.

Secondary antibody: HRP-conjugated Goat anti-Rabbit IgG (H+L) (AS014) at 1:10000 dilution.

Lysates/proteins: 25 $\mu$ g per lane.

Blocking buffer: 3% BSA.

Detection: ECL Basic Kit (RM00020).

Exposure time: 30s.