

# Phospho-BCAR1-Y165 Rabbit pAb

Catalog No.: AP0813

## Basic Information

### Observed MW

130kDa

### Calculated MW

93kDa

### Category

Primary antibody

### Applications

ELISA, WB

### Cross-Reactivity

Human, Mouse, Rat

## Background

The protein encoded by this gene is a member of the Crk-associated substrate (CAS) family of scaffold proteins, characterized by the presence of multiple protein-protein interaction domains and many serine and tyrosine phosphorylation sites. The encoded protein contains a Src-homology 3 (SH3) domain, a proline-rich domain, a substrate domain which contains 15 repeat of the YxxP consensus phosphorylation motif for Src family kinases, a serine-rich domain, and a bipartite Src-binding domain, which can bind both SH2 and SH3 domains. This adaptor protein functions in multiple cellular pathways, including in cell motility, apoptosis and cell cycle control. Dysregulation of this gene can have a wide range of effects, affecting different pathways, including cardiac development, vascular smooth muscle cells, liver and kidney function, endothelial migration, and cancer.

## Recommended Dilutions

WB 1:500 - 1:2000

## Immunogen Information

### Gene ID

9564

### Swiss Prot

P56945

### Immunogen

A synthetic phosphorylated peptide around Y165 of human BCAR1 (NP\_055382.2).

### Synonyms

CAS; CAS1; CASS1; CRKAS; P130Cas; Phospho-BCAR1-Y165

## Contact

☎ | 400-999-6126

✉ | [cn.market@abclonal.com.cn](mailto:cn.market@abclonal.com.cn)

🌐 | [www.abclonal.com.cn](http://www.abclonal.com.cn)

## Product Information

### Source

Rabbit

### Isotype

IgG

### Purification

Affinity purification

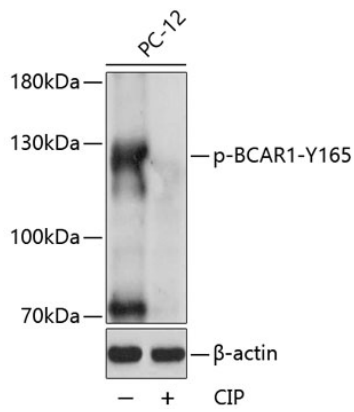
### Storage

Store at -20°C. Avoid freeze / thaw cycles.

Buffer: PBS with 0.01% thimerosal, 50% glycerol, pH7.3.

## Validation Data

---



Western blot analysis of lysates from PC-12 cells, using Phospho-BCAR1-Y165 Rabbit pAb (AP0813) at 1:1000 dilution. PC-12 cell lysate were treated by CIP (20ul CIP for each 400ul cell lysate) at 37°C for 1 hour .

Secondary antibody: HRP Goat Anti-Rabbit IgG (H+L) (AS014) at 1:10000 dilution.

Lysates/proteins: 25µg per lane.

Blocking buffer: 3% BSA.

Detection: ECL Basic Kit (RM00020).

Exposure time: 90s.