

Phospho-PDGFRB-Y1021 Rabbit pAb

Catalog No.: AP0815 **3 Publications**

Basic Information

Observed MW

190kDa

Calculated MW

124kDa

Category

Primary antibody

Applications

ELISA,WB

Cross-Reactivity

Human, Mouse, Rat

Background

The protein encoded by this gene is a cell surface tyrosine kinase receptor for members of the platelet-derived growth factor family. These growth factors are mitogens for cells of mesenchymal origin. The identity of the growth factor bound to a receptor monomer determines whether the functional receptor is a homodimer (PDGFB or PDGFD) or a heterodimer (PDGFA and PDGFB). This gene is essential for normal development of the cardiovascular system and aids in rearrangement of the actin cytoskeleton. This gene is flanked on chromosome 5 by the genes for granulocyte-macrophage colony-stimulating factor and macrophage-colony stimulating factor receptor; all three genes may be implicated in the 5-q syndrome. A translocation between chromosomes 5 and 12, that fuses this gene to that of the ETV6 gene, results in chronic myeloproliferative disorder with eosinophilia.

Recommended Dilutions

WB 1:500 - 1:2000

Immunogen Information

Gene ID

5159

Swiss Prot

P09619

Immunogen

A synthetic phosphorylated peptide around Y1021 of human Phospho-PDGFRB-Y1021 (NP_002600.1).

Synonyms

IMF1; KOGS; IBGC4; JTK12; PDGFR; PENTT; CD140B; PDGFR1; PDGFR-1; Phospho-PDGFRB-Y1021

Contact

 | 400-999-6126 | cn.market@abclonal.com.cn | www.abclonal.com.cn

Product Information

Source

Rabbit

Isotype

IgG

Purification

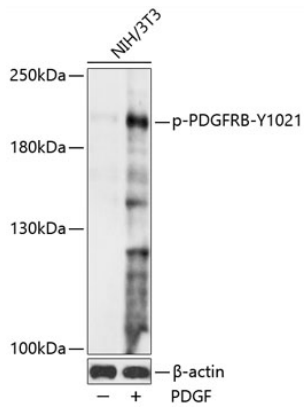
Affinity purification

Storage

Store at -20°C. Avoid freeze / thaw cycles.

Buffer: PBS with 0.01% thimerosal, 50% glycerol, pH7.3.

Validation Data



Western blot analysis of lysates from NIH/3T3 cells, using Phospho-PDGFRB-Y1021 Rabbit pAb (AP0815) at 1:1000 dilution. NIH/3T3 cells were treated by PDGF (100ng/mL) for 30 minutes after serum-starvation overnight.

Secondary antibody: HRP-conjugated Goat anti-Rabbit IgG (H+L) (AS014) at 1:10000 dilution.

Lysates/proteins: 25µg per lane.

Blocking buffer: 3% BSA.

Detection: ECL Basic Kit (RM00020).

Exposure time: 10s.