

Phospho-LCP2-Y145 Rabbit pAb

Catalog No.: AP0816

Basic Information

Observed MW

76kDa

Calculated MW

60kDa

Category

Primary antibody

Applications

ELISA, WB

Cross-Reactivity

Human, Mouse

Background

This gene encodes an adapter protein that acts as a substrate of the T cell antigen receptor (TCR)-activated protein tyrosine kinase pathway. The encoded protein associates with growth factor receptor bound protein 2, and is thought to play a role TCR-mediated intracellular signal transduction. A similar protein in mouse plays a role in normal T-cell development and activation. Mice lacking this gene show subcutaneous and intraperitoneal fetal hemorrhaging, dysfunctional platelets and impaired viability.

Recommended Dilutions

WB 1:500 - 1:2000

Immunogen Information

Gene ID

3937

Swiss Prot

Q13094

Immunogen

A synthetic phosphorylated peptide around Y145 of human LCP2 (NP_005556.1).

Synonyms

IMD81; SLP76; SLP-76; Phospho-LCP2-Y145

Contact

 | 400-999-6126

 | cn.market@abclonal.com.cn

 | www.abclonal.com.cn

Product Information

Source

Rabbit

Isotype

IgG

Purification

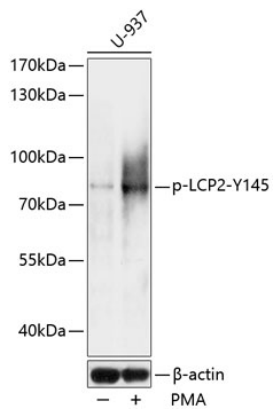
Affinity purification

Storage

Store at -20°C. Avoid freeze / thaw cycles.

Buffer: PBS with 0.01% thimerosal, 50% glycerol, pH7.3.

Validation Data



Western blot analysis of lysates from U937 cells, using Phospho-LCP2-Y145 Rabbit pAb (AP0816) at 1:1000 dilution. U-937 cells were treated by PMA/TPA (200nM) for 30 minutes.
Secondary antibody: HRP-conjugated Goat anti-Rabbit IgG (H+L) (AS014) at 1:10000 dilution.
Lysates/proteins: 25 μ g per lane.
Blocking buffer: 3% BSA.
Detection: ECL Basic Kit (RM00020).
Exposure time: 10s.