

Phospho-EPHA2-Y772 Rabbit pAb

Catalog No.: AP0817 **1 Publications**

Basic Information

Observed MW

108kDa

Calculated MW

108kDa

Category

Primary antibody

Applications

ELISA, WB

Cross-Reactivity

Human, Rat

Background

This gene belongs to the ephrin receptor subfamily of the protein-tyrosine kinase family. EPH and EPH-related receptors have been implicated in mediating developmental events, particularly in the nervous system. Receptors in the EPH subfamily typically have a single kinase domain and an extracellular region containing a Cys-rich domain and 2 fibronectin type III repeats. The ephrin receptors are divided into 2 groups based on the similarity of their extracellular domain sequences and their affinities for binding ephrin-A and ephrin-B ligands. This gene encodes a protein that binds ephrin-A ligands. Mutations in this gene are the cause of certain genetically-related cataract disorders.

Recommended Dilutions

WB 1:500 - 1:2000

Immunogen Information

Gene ID

1969

Swiss Prot

P29317

Immunogen

A synthetic phosphorylated peptide around Y772 of human EphA2 (NP_004422.2).

Synonyms

ECK; CTPA; ARCC2; CTPP1; CTRCT6; Phospho-EPHA2-Y772

Contact

☎ | 400-999-6126

✉ | cn.market@abclonal.com.cn

🌐 | www.abclonal.com.cn

Product Information

Source

Rabbit

Isotype

IgG

Purification

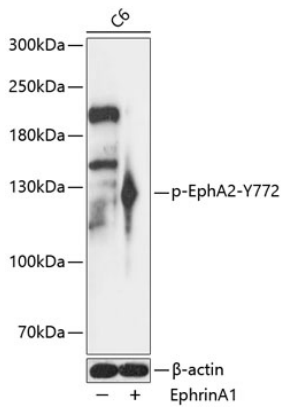
Affinity purification

Storage

Store at -20°C. Avoid freeze / thaw cycles.

Buffer: PBS with 0.01% thimerosal, 50% glycerol, pH7.3.

Validation Data



Western blot analysis of lysates from C6 cells, using Phospho-EPHA2-Y772 Rabbit pAb (AP0817) at 1:1000 dilution. C6 cells were treated by EphrinA1 (100 ng/mL) for 5 minutes .
Secondary antibody: HRP Goat Anti-Rabbit IgG (H+L) (AS014) at 1:10000 dilution.
Lysates/proteins: 25µg per lane.
Blocking buffer: 3% BSA.
Detection: ECL Enhanced Kit (RM00021).
Exposure time: 90s.