

Phospho-CRK/CRKII-Y221 Rabbit pAb

Catalog No.: AP0822

Basic Information

Observed MW

38kDa

Calculated MW

34kDa

Category

Primary antibody

Applications

ELISA, WB

Cross-Reactivity

Human, Mouse, Rat

Background

This gene encodes a member of an adapter protein family that binds to several tyrosine-phosphorylated proteins. The product of this gene has several SH2 and SH3 domains (src-homology domains) and is involved in several signaling pathways, recruiting cytoplasmic proteins in the vicinity of tyrosine kinase through SH2-phosphotyrosine interaction. The N-terminal SH2 domain of this protein functions as a positive regulator of transformation whereas the C-terminal SH3 domain functions as a negative regulator of transformation. Two alternative transcripts encoding different isoforms with distinct biological activity have been described.

Recommended Dilutions

WB 1:500 - 1:2000

Immunogen Information

Gene ID

1398

Swiss Prot

P46108

Immunogen

A synthetic phosphorylated peptide around Y221 of human CRK/CRKII (NP_058431.2).

Synonyms

p38; CRKII; Phospho-CRK/CRKII-Y221

Contact

☎ | 400-999-6126

✉ | cn.market@abclonal.com.cn

🌐 | www.abclonal.com.cn

Product Information

Source

Rabbit

Isotype

IgG

Purification

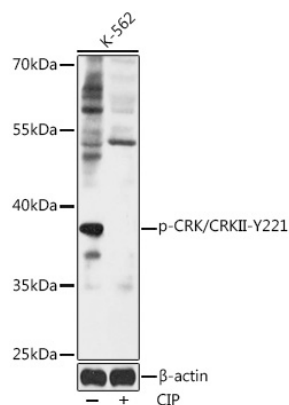
Affinity purification

Storage

Store at -20°C. Avoid freeze / thaw cycles.

Buffer: PBS with 0.01% thimerosal, 50% glycerol, pH7.3.

Validation Data



Western blot analysis of lysates from K562 cells, using Phospho-CRK/CRKII-Y221 Rabbit pAb (AP0822) at 1:1000 dilution. K562 cell lysate were treated by CIP (20ul CIP for each 400ul cell lysate) at 37°C for 1 hour .

Secondary antibody: HRP Goat Anti-Rabbit IgG (H+L) (AS014) at 1:10000 dilution.

Lysates/proteins: 25μg per lane.

Blocking buffer: 3% BSA.

Detection: ECL Basic Kit (RM00020).

Exposure time: 10s.