

Phospho-GluR1/GRIA1-S845 Rabbit pAb

Catalog No.: AP0825

Basic Information

Observed MW

90kDa

Calculated MW

102kDa

Category

Primary antibody

Applications

ELISA, WB

Cross-Reactivity

Human, Mouse, Rat

Background

Glutamate receptors are the predominant excitatory neurotransmitter receptors in the mammalian brain and are activated in a variety of normal neurophysiologic processes. These receptors are heteromeric protein complexes with multiple subunits, each possessing transmembrane regions, and all arranged to form a ligand-gated ion channel. The classification of glutamate receptors is based on their activation by different pharmacologic agonists. This gene belongs to a family of alpha-amino-3-hydroxy-5-methyl-4-isoxazole propionate (AMPA) receptors. Alternatively spliced transcript variants encoding different isoforms have been found for this gene.

Recommended Dilutions

WB 1:500 - 1:2000

Immunogen Information

Gene ID

2890

Swiss Prot

P42261

Immunogen

A phospho specific peptide corresponding to residues surrounding S845 of human GluR1/GRIA1

Synonyms

GLUH1; GLUR1; GLURA; GluA1; HBGR1; MRD67; MRT76; Phospho-GluR1/GRIA1-S845

Contact

☎ | 400-999-6126

✉ | cn.market@abclonal.com.cn

🌐 | www.abclonal.com.cn

Product Information

Source

Rabbit

Isotype

IgG

Purification

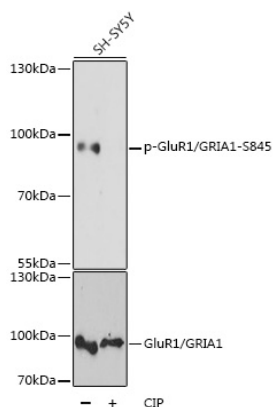
Affinity purification

Storage

Store at -20°C. Avoid freeze / thaw cycles.

Buffer: PBS with 0.01% thimerosal, 50% glycerol, pH7.3.

Validation Data



Western blot analysis of lysates from SH-SY5Y cells, using Phospho-GluR1/GRIA1-S845 Rabbit pAb (AP0825) at 1:1000 dilution or GluR1/GRIA1 antibody (A1826). SH-SY5Y cells were treated by CIP(20uL/400ul) at 37°C for 1 hour.
Secondary antibody: HRP Goat Anti-Rabbit IgG (H+L) (AS014) at 1:10000 dilution.
Lysates/proteins: 25µg per lane.
Blocking buffer: 3% BSA.
Detection: ECL Basic Kit (RM00020).
Exposure time: 15s.