

Phospho-eEF2-T56 Rabbit pAb

Catalog No.: AP0832

Basic Information

Observed MW

95kDa

Calculated MW

95kDa

Category

Primary antibody

Applications

ELISA, WB

Cross-Reactivity

Human, Mouse, Rat

Background

This gene encodes a member of the GTP-binding translation elongation factor family. This protein is an essential factor for protein synthesis. It promotes the GTP-dependent translocation of the nascent protein chain from the A-site to the P-site of the ribosome. This protein is completely inactivated by EF-2 kinase phosphorylation.

Recommended Dilutions

WB 1:500 - 1:2000

Immunogen Information

Gene ID

1938

Swiss Prot

P13639

Immunogen

A synthetic phosphorylated peptide around T56 of human Phospho-eEF2-T56 (NP_001952.1).

Synonyms

EF2; EF-2; EEF-2; SCA26; Phospho-eEF2-T56

Contact

☎ | 400-999-6126

✉ | cn.market@abclonal.com.cn

🌐 | www.abclonal.com.cn

Product Information

Source

Rabbit

Isotype

IgG

Purification

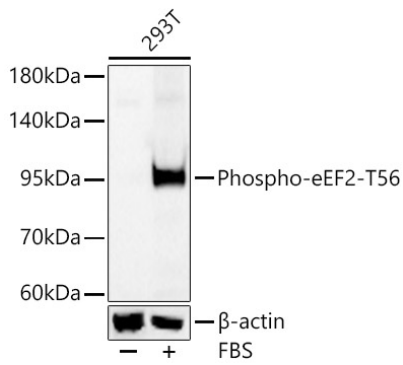
Affinity purification

Storage

Store at -20°C. Avoid freeze / thaw cycles.

Buffer: PBS with 0.01% thimerosal, 50% glycerol, pH7.3.

Validation Data



Western blot analysis of lysates from 293T cells, using Phospho-eEF2-T56 Rabbit pAb (AP0832) at 1:3000 dilution. 293T cells were treated by 20% FBS at 37°C for 20 minutes after serum-starvation overnight. Secondary antibody: HRP-conjugated Goat anti-Rabbit IgG (H+L) (AS014) at 1:10000 dilution. Lysates/proteins: 25µg per lane. Blocking buffer: 3% nonfat dry milk in TBST. Detection: ECL Basic Kit (RM00020). Exposure time: 5s.