

# Phospho-PLC beta 3 (PLCB3)-S1105 Rabbit pAb

Catalog No.: AP0837 **1 Publications**

## Basic Information

### Observed MW

150kDa

### Calculated MW

139kDa

### Category

Primary antibody

### Applications

WB,ELISA

### Cross-Reactivity

Human, Mouse, Rat

## Background

This gene encodes a member of the phosphoinositide phospholipase C beta enzyme family that catalyze the production of the secondary messengers diacylglycerol and inositol 1,4,5-triphosphate from phosphatidylinositol in G-protein-linked receptor-mediated signal transduction. Alternative splicing results in multiple transcript variants.

## Recommended Dilutions

**WB** 1:500 - 1:2000

**ELISA** Recommended starting concentration is 1 µg/mL. Please optimize the concentration based on your specific assay requirements.

## Immunogen Information

### Gene ID

5331

### Swiss Prot

Q01970

### Immunogen

Synthetic peptide. This information is considered to be commercially sensitive.

### Synonyms

SMDCD; Phospho-PLC beta 3 (PLCB3)-S1105

## Contact

☎ | 400-999-6126

✉ | [cn.market@abclonal.com.cn](mailto:cn.market@abclonal.com.cn)

🌐 | [www.abclonal.com.cn](http://www.abclonal.com.cn)

## Product Information

### Source

Rabbit

### Isotype

IgG

### Purification

Affinity purification

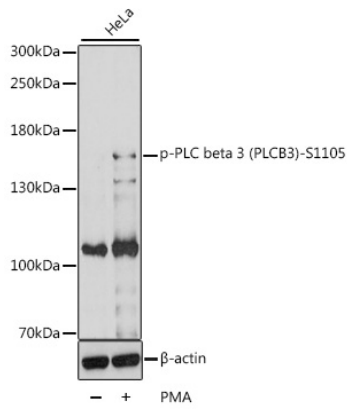
### Storage

Store at -20°C. Avoid freeze / thaw cycles.

Buffer: PBS with 0.01% thimerosal, 50% glycerol, pH7.3.

## Validation Data

---



Western blot analysis of lysates from HeLa cells, using Phospho-PLC beta 3 (PLCB3)-S1105 Rabbit pAb (AP0837) at 1:1000 dilution. HeLa cells were treated with PMA/TPA (200nM) for 15 minutes after serum-starvation overnight.  
Secondary antibody: HRP-conjugated Goat anti-Rabbit IgG (H+L) (AS014) at 1:10000 dilution.  
Lysates/proteins: 25µg per lane.  
Blocking buffer: 3% BSA.  
Detection: ECL Basic Kit (RM00020).  
Exposure time: 10s.