

Phospho-PPIG-S376 Rabbit pAb

Catalog No.: AP0842

Basic Information

Observed MW

110kDa

Calculated MW

89kDa

Category

Primary antibody

Applications

ELISA, WB

Cross-Reactivity

Human, Mouse, Rat

Background

Enables cyclosporin A binding activity and peptidyl-prolyl cis-trans isomerase activity. Involved in protein peptidyl-prolyl isomerization. Located in cytosol and nuclear speck.

Recommended Dilutions

WB 1:500 - 1:2000

Immunogen Information

Gene ID

9360

Swiss Prot

Q13427

Immunogen

A synthetic phosphorylated peptide around S376 of human PPIG (NP_004783.2).

Synonyms

CYP; SRCyp; SCAF10; CARS-Cyp; Phospho-PPIG-S376

Contact

 | 400-999-6126

 | cn.market@abclonal.com.cn

 | www.abclonal.com.cn

Product Information

Source

Rabbit

Isotype

IgG

Purification

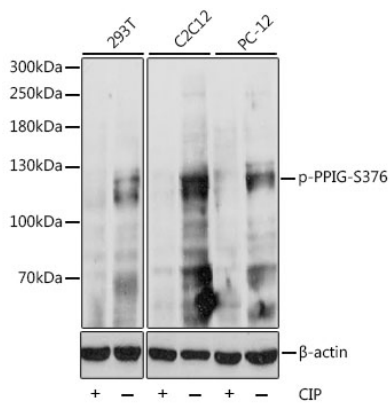
Affinity purification

Storage

Store at -20°C. Avoid freeze / thaw cycles.

Buffer: PBS with 0.01% thimerosal, 50% glycerol, pH7.3.

Validation Data



Western blot analysis of various lysates using Phospho-PPIG-S376 Rabbit pAb (AP0842) at 1:1000 dilution. 293T cell lysate were treated by CIP (20ul CIP for each 400ul cell lysate) at 37°C for 1 hour. C2C12 cell lysate were treated by CIP (20ul CIP for each 400ul cell lysate) at 37°C for 1 hour. PC-12 cell lysate were treated by CIP (20ul CIP for each 400ul cell lysate) at 37°C for 1 hour. Secondary antibody: HRP Goat Anti-Rabbit IgG (H+L) (AS014) at 1:10000 dilution. Lysates/proteins: 25µg per lane. Blocking buffer: 3% BSA. Detection: ECL Basic Kit (RM00020). Exposure time: 90s.