

Phospho-EEF2K-S366 Rabbit pAb

Catalog No.: AP0845 **3 Publications**

Basic Information

Observed MW

110kDa

Calculated MW

82kDa

Category

Primary antibody

Applications

ELISA, WB

Cross-Reactivity

Human, Mouse, Rat

Background

This gene encodes a highly conserved protein kinase in the calmodulin-mediated signaling pathway that links activation of cell surface receptors to cell division. This kinase is involved in the regulation of protein synthesis. It phosphorylates eukaryotic elongation factor 2 (EEF2) and thus inhibits the EEF2 function. The activity of this kinase is increased in many cancers and may be a valid target for anti-cancer treatment.

Recommended Dilutions

WB 1:500 - 1:2000

Immunogen Information

Gene ID

29904

Swiss Prot

O00418

Immunogen

A synthetic phosphorylated peptide around S366 of human EEF2K (NP_037434.1).

Synonyms

eEF-2K; CaMKIII; HSU93850; Phospho-EEF2K-S366

Contact

☎ | 400-999-6126

✉ | cn.market@abclonal.com.cn

🌐 | www.abclonal.com.cn

Product Information

Source

Rabbit

Isotype

IgG

Purification

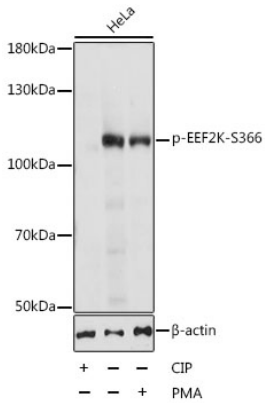
Affinity purification

Storage

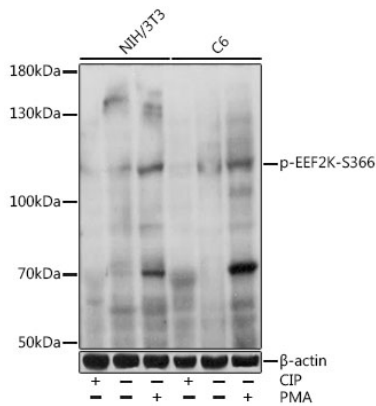
Store at -20°C. Avoid freeze / thaw cycles.

Buffer: PBS with 0.01% thimerosal, 50% glycerol, pH7.3.

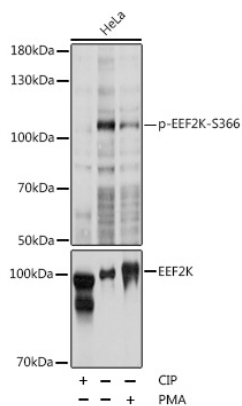
Validation Data



Western blot analysis of lysates from HeLa cells, using Phospho-EEF2K-S366 Rabbit pAb (AP0845) at 1:1000 dilution. HeLa cell lysate were treated by CIP (20ul CIP for each 400ul cell lysate) at 37°C for 1 hour or treated by PMA/TPA (200nM) for 15 minutes after serum-starvation overnight. Secondary antibody: HRP-conjugated Goat anti-Rabbit IgG (H+L) (AS014) at 1:10000 dilution. Lysates/proteins: 25µg per lane. Blocking buffer: 3% BSA. Detection: ECL Basic Kit (RM00020). Exposure time: 15s.



Western blot analysis of various lysates using Phospho-EEF2K-S366 Rabbit pAb (AP0845) at 1:1000 dilution. NIH/3T3 and C6 cells were treated by CIP(20uL/400ul) at 37°C for 1 hour or PMA/TPA (200 nM) at 37°C for 30 minutes after serum-starvation overnight. Secondary antibody: HRP-conjugated Goat anti-Rabbit IgG (H+L) (AS014) at 1:10000 dilution. Lysates/proteins: 25µg per lane. Blocking buffer: 3% nonfat dry milk in TBST. Detection: ECL Basic Kit (RM00020). Exposure time: 30s.



Western blot analysis of lysates from HeLa cells, using Phospho-EEF2K-S366 Rabbit pAb (A5404). HeLa cell lysate were treated by CIP (20ul CIP for each 400ul cell lysate) at 37°C for 1 hour or treated by PMA/TPA (200nM) for 15 minutes after serum-starvation overnight. Secondary antibody: HRP-conjugated Goat anti-Rabbit IgG (H+L) (AS014) at 1:10000 dilution. Lysates/proteins: 25µg per lane. Blocking buffer: 3% BSA. Detection: ECL Basic Kit (RM00020). Exposure time: 15s.