

Phospho-Smad1-S463/465 + Smad5-S463/465 + Smad9-S465/467 Rabbit pAb

Catalog No.: AP0850 **4 Publications**

Basic Information

Observed MW

60kDa

Calculated MW

60kDa

Category

Primary antibody

Applications

ELISA, WB

Cross-Reactivity

Human, Mouse

Background

Transcriptional modulator activated by BMP (bone morphogenetic proteins) type 1 receptor kinase. SMAD1 is a receptor-regulated SMAD (R-SMAD). SMAD1/OAZ1/PSMB4 complex mediates the degradation of the CREBBP/EP300 repressor SNIP1. May act synergistically with SMAD4 and YY1 in bone morphogenetic protein (BMP)-mediated cardiac-specific gene expression.

Recommended Dilutions

WB 1:500 - 1:2000

Immunogen Information

Gene ID

4086/4090/4093

Swiss Prot

Q15797/Q99717/O15198

Immunogen

A synthetic phosphorylated peptide around S463 & S465 of human Smad1/SMAD1 (NP_005891.1).

Synonyms

Smad1/Smad5/Smad9; Phospho-Smad1-S463/465 + Smad5-S463/465 + Smad9-S465/467

Contact

☎ | 400-999-6126

✉ | cn.market@abclonal.com.cn

🌐 | www.abclonal.com.cn

Product Information

Source

Rabbit

Isotype

IgG

Purification

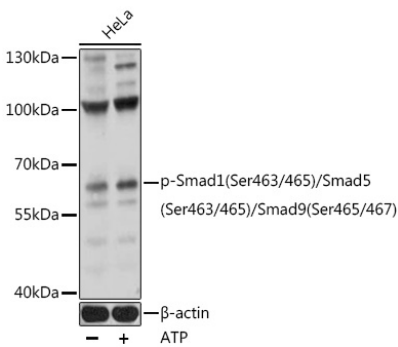
Affinity purification

Storage

Store at -20°C. Avoid freeze / thaw cycles.

Buffer: PBS with 0.01% thimerosal, 50% glycerol, pH7.3.

Validation Data



Western blot analysis of lysates from HeLa cells, using Phospho-Smad1(Ser463/465)/Smad5(Ser463/465)/Smad9(Ser465/467) pAb (AP0850) at 1:1000 dilution. HeLa cells were treated by ATP(5 mM) at 30°C for 1 hour. Secondary antibody: HRP Goat Anti-Rabbit IgG (H+L) (AS014) at 1:10000 dilution. Lysates/proteins: 25µg per lane. Blocking buffer: 3% BSA. Detection: ECL Basic Kit (RM00020). Exposure time: 60s.