

Phospho-HSL-S563 Rabbit pAb

Catalog No.: AP0851SP **6 Publications**

Basic Information

Observed MW

83 kDa

Calculated MW

117 kDa/84 kDa

Category

Primary antibody

Applications

WB, ELISA

Cross-Reactivity

Mouse

Background

The protein encoded by this gene has a long and a short form, generated by use of alternative translational start codons. The long form is expressed in steroidogenic tissues such as testis, where it converts cholesteryl esters to free cholesterol for steroid hormone production. The short form is expressed in adipose tissue, among others, where it hydrolyzes stored triglycerides to free fatty acids.

Recommended Dilutions

WB 1:1000 - 1:2000

ELISA Recommended starting concentration is 1 µg/mL. Please optimize the concentration based on your specific assay requirements. For high-ratio antibody dilutions ($\geq 1:10000$) a sequential dilution method is strongly recommended to ensure measurement accuracy.

Contact

 | 400-999-6126

 | cn.market@abclonal.com.cn

 | www.abclonal.com.cn

Immunogen Information

Gene ID

3991

Swiss Prot

Q05469

Immunogen

Synthetic peptide. This information is considered to be commercially sensitive.

Synonyms

HSL; LHS; REH; AOMS4; FPLD6

Product Information

Source

Rabbit

Isotype

IgG

Purification

Affinity purification

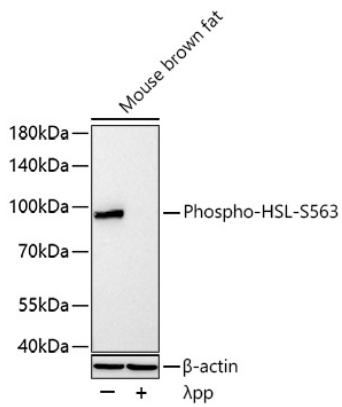
Storage

Store at -20°C. Avoid freeze / thaw cycles.

Buffer: PBS, pH 7.3, containing 50% glycerol. Preserved with Proclin300 or sodium azide.

May contain 0.05% BSA as specified on the Certificate of Analysis.

Validation Data



Western blot analysis of lysates from Mouse brown fat using Phospho-HSL-S563 Rabbit pAb (AP0851SP) at 1:1000 dilution incubated overnight at 4°C. Mouse brown fat cells were treated with λ pp (100U) at 30°C for 1 hours.

Secondary antibody: HRP-conjugated Goat anti-Rabbit IgG (H+L) (AS014) at 1:10000 dilution.

Lysates/proteins: 30 μ g per lane.

Blocking buffer: 3% nonfat dry milk in TBST.

Detection: ECL Basic Kit (RM00020).

Exposure time: 45 s.