

Phospho-FOXO1-T24/FOXO3A-T32/FOXO4-T28 Rabbit pAb

Catalog No.: AP0892

Basic Information

Observed MW

65kDa/73kDa

Calculated MW

Category

Primary antibody

Applications

ELISA, WB, IHC-P

Cross-Reactivity

Human, Mouse, Rat

Background

This gene belongs to the forkhead family of transcription factors which are characterized by a distinct forkhead domain. The specific function of this gene has not yet been determined; however, it may play a role in myogenic growth and differentiation. Translocation of this gene with PAX3 has been associated with alveolar rhabdomyosarcoma. [provided by RefSeq, Jul 2008]

Recommended Dilutions

WB 1:100 - 1:500

IHC-P 1:50 - 1:200

Immunogen Information

Gene ID

2308/2309/4303

Swiss Prot

Q12778/O43524

Immunogen

A synthetic phosphorylated peptide around T24 of human FOXO1/FOXO3A/FOXO4FOXO1 (NP_002006.2).

Synonyms

FoxO1/FoxO3a/FoxO4; Phospho-FOXO1-T24/FOXO3A-T32/FOXO4-T28

Contact

 | 400-999-6126

 | cn.market@abclonal.com.cn

 | www.abclonal.com.cn

Product Information

Source

Rabbit

Isotype

IgG

Purification

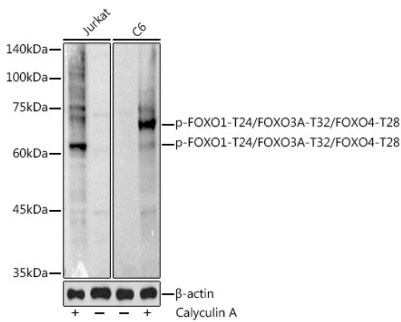
Affinity purification

Storage

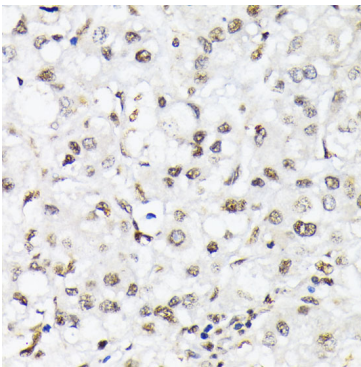
Store at -20°C. Avoid freeze / thaw cycles.

Buffer: PBS with 0.01% thimerosal, 50% glycerol, pH7.3.

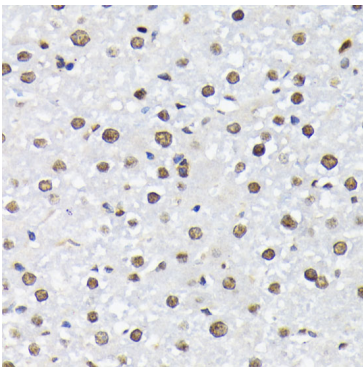
Validation Data



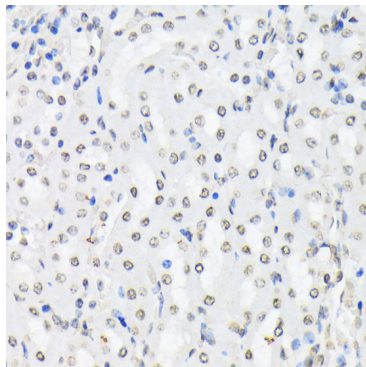
Western blot analysis of various lysates using Phospho-FOXO1-T24/FOXO3A-T32/FOXO4-T28 Rabbit pAb (AP0892) at 1:500 dilution. Jurkat cells were treated by Calyculin A (100 nM) at 37°C for 30 minutes. Secondary antibody: HRP Goat Anti-Rabbit IgG (H+L) (AS014) at 1:10000 dilution. Lysates/proteins: 25µg per lane. Blocking buffer: 3% nonfat dry milk in TBST. Detection: ECL Basic Kit (RM00020). Exposure time: 30s.



Immunohistochemistry analysis of Phospho-FOXO1-T24/FOXO3A-T32/FOXO4-T28 in paraffin-embedded human liver cancer using Phospho-FOXO1-T24/FOXO3A-T32/FOXO4-T28 Rabbit pAb (AP0892) at dilution of 1:200 (40x lens). Perform microwave antigen retrieval with 10 mM Tris/EDTA buffer pH 9.0 before commencing with IHC staining protocol.



Immunohistochemistry analysis of Phospho-FOXO1-T24/FOXO3A-T32/FOXO4-T28 in paraffin-embedded rat liver using Phospho-FOXO1-T24/FOXO3A-T32/FOXO4-T28 Rabbit pAb (AP0892) at dilution of 1:200 (40x lens). Perform microwave antigen retrieval with 10 mM Tris/EDTA buffer pH 9.0 before commencing with IHC staining protocol.



Immunohistochemistry analysis of Phospho-FOXO1-T24/FOXO3A-T32/FOXO4-T28 in paraffin-embedded mouse kidney using Phospho-FOXO1-T24/FOXO3A-T32/FOXO4-T28 Rabbit pAb (AP0892) at dilution of 1:200 (40x lens). Perform microwave antigen retrieval with 10 mM Tris/EDTA buffer pH 9.0 before commencing with IHC staining protocol.