

Phospho-Histone H4-S1 Rabbit pAb

Catalog No.: AP0901

Basic Information

Observed MW

17kDa

Calculated MW

11kDa

Category

Primary antibody

Applications

ELISA, WB

Cross-Reactivity

Human, Mouse, Rat, Other (Wide Range Predicted)

Background

Histones are basic nuclear proteins that are responsible for the nucleosome structure of the chromosomal fiber in eukaryotes. Two molecules of each of the four core histones (H2A, H2B, H3, and H4) form an octamer, around which approximately 146 bp of DNA is wrapped in repeating units, called nucleosomes. The linker histone, H1, interacts with linker DNA between nucleosomes and functions in the compaction of chromatin into higher order structures. This gene is intronless and encodes a replication-dependent histone that is a member of the histone H4 family. Transcripts from this gene lack polyA tails but instead contain a palindromic termination element. This gene is found in the large histone gene cluster on chromosome 6.

Recommended Dilutions

WB 1:500 - 1:2000

Immunogen Information

Gene ID

8359

Swiss Prot

P62805

Immunogen

A synthetic phosphorylated peptide around S1 of human Histone H4 (NP_003529.1).

Synonyms

H4C2; H4C3; H4C4; H4C5; H4C6; H4C8; H4C9; H4FA; H4-16; H4C11; H4C12; H4C13; H4C14; H4C15; H4C16; HIST1H4A; Phospho-Histone H4-S1

Contact

☎ | 400-999-6126

✉ | cn.market@abclonal.com.cn

🌐 | www.abclonal.com.cn

Product Information

Source

Rabbit

Isotype

IgG

Purification

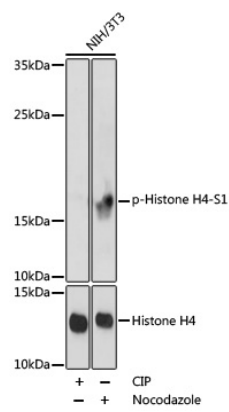
Affinity purification

Storage

Store at -20°C. Avoid freeze / thaw cycles.

Buffer: PBS with 0.01% thimerosal, 50% glycerol, pH7.3.

Validation Data



Western blot analysis of lysates from NIH/3T3 cells, using phospho-STK4-T387 pAb (AP0901) at 1:1000 dilution or Histone H4 Rabbit pAb (A1131). NIH/3T3 cells were treated by CIP(20uL/400ul) at 37°C for 1 hour or Nocodazole (50 ng/mL) at 37°C for 20 hours.

Secondary antibody: HRP Goat Anti-Rabbit IgG (H+L) (AS014) at 1:10000 dilution.

Lysates/proteins: 25µg per lane.

Blocking buffer: 3% BSA.

Detection: ECL Basic Kit (RM00020).

Exposure time: 180s.