

Phospho-RALGAPA1-Thr735 Rabbit pAb

Catalog No.: AP0908

Basic Information

Observed MW

320kDa

Calculated MW

229kDa

Category

Primary antibody

Applications

ELISA, WB

Cross-Reactivity

Human, Mouse

Background

Predicted to enable GTPase activator activity and protein heterodimerization activity. Acts upstream of or within regulation of transcription, DNA-templated. Located in cytoplasm and nucleus. Is expressed in several structures, including 1st branchial arch; brain; and trunk. Orthologous to human RALGAPA1 (Ral GTPase activating protein catalytic subunit alpha 1).

Recommended Dilutions

WB 1:500 - 1:2000

Immunogen Information

Gene ID

56784

Swiss Prot

Q6GYP7

Immunogen

A synthetic phosphorylated peptide around T735 of RALGAPA1 (NP_064378.4).

Synonyms

GRIPE; Garnl1; Tulip1; mKIAA0884; 2310003F20Rik; 4930400K19Rik; Phospho-RALGAPA1-Thr735

Contact

☎ | 400-999-6126

✉ | cn.market@abclonal.com.cn

🌐 | www.abclonal.com.cn

Product Information

Source

Rabbit

Isotype

IgG

Purification

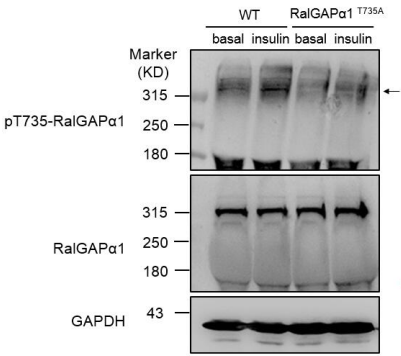
Affinity purification

Storage

Store at -20°C. Avoid freeze / thaw cycles.

Buffer: PBS with 0.01% thimerosal, 50% glycerol, pH7.3.

Validation Data



Western blot analysis of extracts of mouse skeletal muscle, using Phospho-RALGAPA1-Thr735 antibody(AP0908) at 1:1000 dilution.
Secondary antibody: HRP Goat Anti-Rabbit IgG at 1:5000 dilution.
Lysates/proteins: 40µg per lane.
Blocking buffer: 5% nonfat dry milk in TBST.
Detection: ECL Basic Kit.
Exposure time: 60s