

phospho-YAP1-S397 Rabbit pAb

Catalog No.: AP0922

5 Publications

Basic Information

Observed MW

75kDa

Calculated MW

54kDa

Category

Primary antibody

Applications

WB,IF/ICC,ELISA

Cross-Reactivity

Human, Mouse, Rat

Background

This gene encodes a downstream nuclear effector of the Hippo signaling pathway which is involved in development, growth, repair, and homeostasis. This gene is known to play a role in the development and progression of multiple cancers as a transcriptional regulator of this signaling pathway and may function as a potential target for cancer treatment. Alternative splicing results in multiple transcript variants encoding different isoforms.

Recommended Dilutions

WB 1:500 - 1:1000

IF/ICC 1:50 - 1:200

ELISA Recommended starting concentration is 1 µg/mL. Please optimize the concentration based on your specific assay requirements.

Immunogen Information

Gene ID

10413

Swiss Prot

P46937

Immunogen

Synthetic peptide. This information is considered to be commercially sensitive.

Synonyms

YAP; YKI; COB1; YAP2; YAP-1; YAP65; phospho-YAP1-S397

Contact

☎ | 400-999-6126

✉ | cn.market@abclonal.com.cn

🌐 | www.abclonal.com.cn

Product Information

Source

Rabbit

Isotype

IgG

Purification

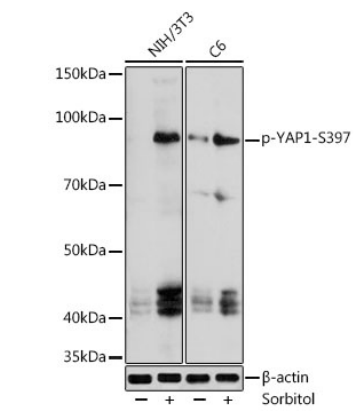
Affinity purification

Storage

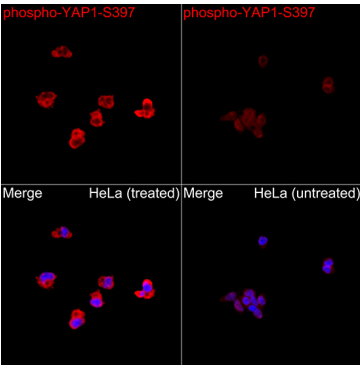
Store at -20°C. Avoid freeze / thaw cycles.

Buffer: PBS with 0.09% sodium azide,50% glycerol,pH7.3.

Validation Data



Western blot analysis of various lysates using phospho-YAP1-S397 Rabbit pAb (AP0922) at 1:1000 dilution. NIH3T3 cells and C6 cells were treated by Sorbitol (0. 2M) at 37°C for 60 minutes after serum-starvation overnight.
Secondary antibody: HRP-conjugated Goat anti-Rabbit IgG (H+L) (AS014) at 1:10000 dilution.
Lysates/proteins: 25 μ g per lane.
Blocking buffer: 3% nonfat dry milk in TBST.
Detection: ECL Enhanced Kit (RM00021).
Exposure time: 1s.



Immunofluorescence analysis of HeLa cells (treated with CA) and HeLa cells (untreated) using phospho-YAP1-S397 Rabbit pAb (AP0922) at a dilution of 1:100 (40x lens). Secondary antibody: Cy3-conjugated Goat anti-Rabbit IgG (H+L)(AS007) at 1:500 dilution. Blue: DAPI for nuclear staining.