

Phospho-ARHGEF2-S886 Rabbit pAb

Catalog No.: AP0926

Basic Information

Observed MW

120kDa

Calculated MW

112kDa

Category

Primary antibody

Applications

ELISA, WB

Cross-Reactivity

Human, Mouse, Rat

Background

Rho GTPases play a fundamental role in numerous cellular processes that are initiated by extracellular stimuli that work through G protein coupled receptors. The encoded protein may form complex with G proteins and stimulate rho-dependent signals. Alternatively spliced transcript variants encoding different isoforms have been identified.

Recommended Dilutions

WB 1:500 - 1:2000

Immunogen Information

Gene ID

9181

Swiss Prot

Q92974

Immunogen

A synthetic phosphorylated peptide around S886 of human ARHGEF2 (NP_001155855.1?).

Synonyms

GEF; Lfc; P40; GEFH1; LFP40; GEF-H1; NEDMHM; Phospho-ARHGEF2-S886

Contact

 | 400-999-6126

 | cn.market@abclonal.com.cn

 | www.abclonal.com.cn

Product Information

Source

Rabbit

Isotype

IgG

Purification

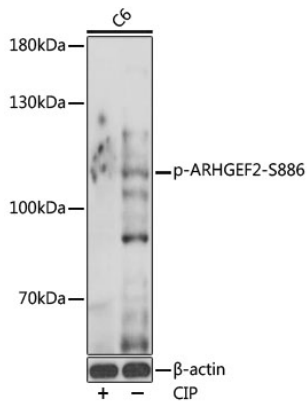
Affinity purification

Storage

Store at -20°C. Avoid freeze / thaw cycles.

Buffer: PBS with 0.01% thimerosal, 50% glycerol, pH7.3.

Validation Data



Western blot analysis of lysates from C6 cells, using Phospho-ARHGEF2-S886 Rabbit pAb (AP0926) at 1:1000 dilution. C6 were treated by CIP (20ul CIP for each 400ul cell lysate) at 37°C for 1 hour. Secondary antibody: HRP Goat Anti-Rabbit IgG (H+L) (AS014) at 1:10000 dilution. Lysates/proteins: 25µg per lane. Blocking buffer: 3% BSA. Detection: ECL Basic Kit (RM00020). Exposure time: 1s.