

# Phospho-PPP2CA/PPP2CB-Y307 Rabbit pAb

Catalog No.: AP0927 **3 Publications**

## Basic Information

### Observed MW

38kDa

### Calculated MW

### Category

Primary antibody

### Applications

ELISA, WB

### Cross-Reactivity

Human, Mouse

## Background

This gene encodes the phosphatase 2A catalytic subunit. Protein phosphatase 2A is one of the four major Ser/Thr phosphatases, and it is implicated in the negative control of cell growth and division. It consists of a common heteromeric core enzyme, which is composed of a catalytic subunit and a constant regulatory subunit, that associates with a variety of regulatory subunits. This gene encodes an alpha isoform of the catalytic subunit. [provided by RefSeq, Jul 2008]

## Recommended Dilutions

WB 1:500 - 1:2000

## Immunogen Information

### Gene ID

5515/5516

### Swiss Prot

P67775/P62714

### Immunogen

A synthetic phosphorylated peptide around Y307 of human PPP2CA/PPP2CBPPP2CB (NP\_001009552.1).

### Synonyms

PPP2CA/PPP2CB; Phospho-PPP2CA/PPP2CB-Y307

## Contact

 | 400-999-6126

 | [cn.market@abclonal.com.cn](mailto:cn.market@abclonal.com.cn)

 | [www.abclonal.com.cn](http://www.abclonal.com.cn)

## Product Information

### Source

Rabbit

### Isotype

IgG

### Purification

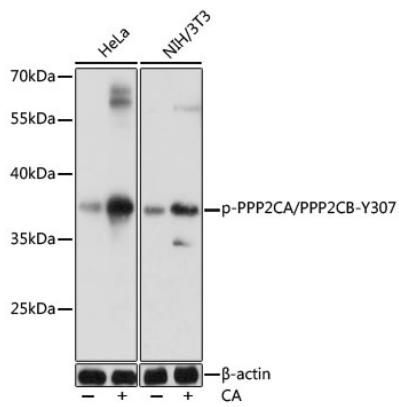
Affinity purification

### Storage

Store at -20°C. Avoid freeze / thaw cycles.

Buffer: PBS with 0.01% thimerosal, 50% glycerol, pH7.3.

## Validation Data



Western blot analysis of various lysates using Phospho-PPP2CA/PPP2CB-Y307 Rabbit pAb (AP0927) at 1:1000 dilution. HeLa cells were treated by Calyculin A (100nM) for 30 minutes after serum-starvation overnight. NIH/3T3 cells were treated by Calyculin A (100nM) for 30 minutes after serum-starvation overnight.

Secondary antibody: HRP-conjugated Goat anti-Rabbit IgG (H+L) (AS014) at 1:10000 dilution.

Lysates/proteins: 25 $\mu$ g per lane.

Blocking buffer: 3% BSA.

Detection: ECL Basic Kit (RM00020).

Exposure time: 1s.