

# Phospho-SMO-S616 Rabbit pAb

Catalog No.: AP0938

## Basic Information

### Observed MW

Refer to figures

### Calculated MW

86kDa

### Category

Primary antibody

### Applications

WB,DB,ELISA

### Cross-Reactivity

Human

## Background

The protein encoded by this gene is a G protein-coupled receptor that interacts with the patched protein, a receptor for hedgehog proteins. The encoded protein transduces signals to other proteins after activation by a hedgehog protein/patched protein complex.

## Recommended Dilutions

**WB** 1:500 - 1:1000

**DB** 1:500 - 1:1000

**ELISA** Recommended starting concentration is 1 µg/mL. Please optimize the concentration based on your specific assay requirements.

## Immunogen Information

### Gene ID

6608

### Swiss Prot

Q99835

### Immunogen

A synthetic phosphorylated peptide around S616 of human SMO (NP\_005622.1).

### Synonyms

Gx; CRJS; PHL5; SMOH; FZD11; Phospho-SMO-S616

## Contact

☎ | 400-999-6126

✉ | [cn.market@abclonal.com.cn](mailto:cn.market@abclonal.com.cn)

🌐 | [www.abclonal.com.cn](http://www.abclonal.com.cn)

## Product Information

### Source

Rabbit

### Isotype

IgG

### Purification

Affinity purification

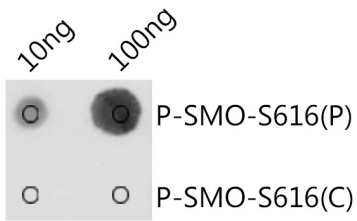
### Storage

Store at -20°C. Avoid freeze / thaw cycles.

Buffer: PBS with 0.01% thimerosal, 50% glycerol, pH7.3.

## Validation Data

---



Dot-blot analysis of all sorts of peptides using Phospho-SMO-S616 antibody (AP0938) at 1:1000 dilution.  
Exposure time: 1s.