

Phospho-SMO-S611/615 Rabbit pAb

Catalog No.: AP0939

Basic Information

Observed MW

86kDa

Calculated MW

86kDa

Category

Primary antibody

Applications

ELISA, WB

Cross-Reactivity

Human

Background

The protein encoded by this gene is a G protein-coupled receptor that interacts with the patched protein, a receptor for hedgehog proteins. The encoded protein transduces signals to other proteins after activation by a hedgehog protein/patched protein complex.

Recommended Dilutions

WB 1:500 - 1:1000

Immunogen Information

Gene ID

6608

Swiss Prot

Q99835

Immunogen

A synthetic phosphorylated peptide around S611 & S615 of human SMO (NP_005622.1).

Synonyms

Gx; CRJS; PHL5; SMOH; FZD11; Phospho-SMO-S611/615

Contact

 | 400-999-6126

 | cn.market@abclonal.com.cn

 | www.abclonal.com.cn

Product Information

Source

Rabbit

Isotype

IgG

Purification

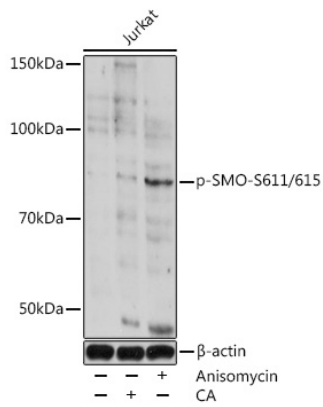
Affinity purification

Storage

Store at -20°C. Avoid freeze / thaw cycles.

Buffer: PBS with 0.01% thimerosal, 50% glycerol, pH7.3.

Validation Data



Western blot analysis of lysates from Jurkat cells, using Phospho-SMO-S611/615 Rabbit pAb (AP0939) at 1:1000 dilution. Jurkat cells were treated by Calyculin A (100 nM) at 37°C for 30 minutes. Jurkat cells were treated by Anisomycin (25 µg/mL) at 37°C for 20 minutes.
Secondary antibody: HRP-conjugated Goat anti-Rabbit IgG (H+L) (AS014) at 1:10000 dilution.
Lysates/proteins: 25µg per lane.
Blocking buffer: 3% BSA.
Detection: ECL Basic Kit (RM00020).
Exposure time: 60s.