

Phospho-NF-kB p65/RelA-S529 Rabbit pAb

Catalog No.: AP0944 **3 Publications**

Basic Information

Observed MW

65kDa/

Calculated MW

60kDa

Category

Primary antibody

Applications

ELISA,WB

Cross-Reactivity

Human, Mouse, Rat

Background

NF-kappa-B is a ubiquitous transcription factor involved in several biological processes. It is held in the cytoplasm in an inactive state by specific inhibitors. Upon degradation of the inhibitor, NF-kappa-B moves to the nucleus and activates transcription of specific genes. NF-kappa-B is composed of NFKB1 or NFKB2 bound to either REL, RELA, or RELB. The most abundant form of NF-kappa-B is NFKB1 complexed with the product of this gene, RELA. Four transcript variants encoding different isoforms have been found for this gene.

Recommended Dilutions

WB 1:500 - 1:2000

Immunogen Information

Gene ID

5970

Swiss Prot

Q04206

Immunogen

A synthetic phosphorylated peptide around S529 of human NF-kB p65/RelA (NP_068810.3).

Synonyms

p65; CMCU; NFKB3; AIF3BL3; Phospho-NF-kB p65/RelA-S529

Contact

 | 400-999-6126

 | cn.market@abclonal.com.cn

 | www.abclonal.com.cn

Product Information

Source

Rabbit

Isotype

IgG

Purification

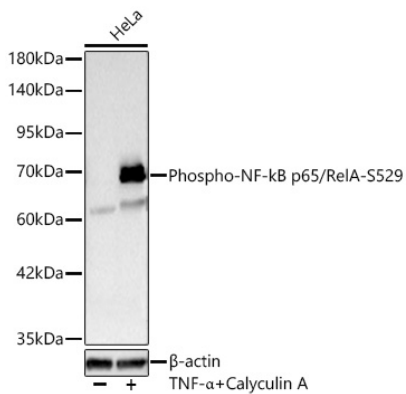
Affinity purification

Storage

Store at -20°C. Avoid freeze / thaw cycles.

Buffer: PBS with 0.01% thimerosal, 50% glycerol, pH7.3.

Validation Data



Western blot analysis of lysates from HeLa cells using Phospho-NF-kB p65/RelA-S529 Rabbit pAb (AP0944) at 1:500 dilution incubated overnight at 4°C. HeLa cells were treated by TNF- α (100 ng/ml) and Calyculin A (50 nM) at 37°C for 10 minutes.
Secondary antibody: HRP-conjugated Goat anti-Rabbit IgG (H+L) (AS014) at 1:10000 dilution.
Lysates/proteins: 30 μ g per lane.
Blocking buffer: 3 % nonfat dry milk in TBST.
Detection: ECL Basic Kit (RM00020).
Exposure time: 60s.