

Phospho-CGAS-Y215 Rabbit pAb

Catalog No.: AP0946 **4 Publications**

Basic Information

Observed MW

59kDa

Calculated MW

59kDa

Category

Primary antibody

Applications

WB, ELISA

Cross-Reactivity

Human, Mouse, Rat

Background

Enables several functions, including 2',3'-cyclic GMP-AMP synthase activity; chromatin binding activity; and phosphatidylinositol-4,5-bisphosphate binding activity. Involved in several processes, including cellular response to exogenous dsRNA; positive regulation of intracellular signal transduction; and regulation of defense response. Located in several cellular components, including cytosol; nucleus; and site of double-strand break.

Recommended Dilutions

WB 1:500 - 1:2000

ELISA Recommended starting concentration is 1 µg/mL. Please optimize the concentration based on your specific assay requirements.

Immunogen Information

Gene ID

115004

Swiss Prot

Q8N884

Immunogen

A synthetic phosphorylated peptide around Y215 of human CGAS (NP_612450.2).

Synonyms

MB21D1; h-cGAS; C6orf150; Phospho-CGAS-Y215

Contact

 | 400-999-6126

 | cn.market@abclonal.com.cn

 | www.abclonal.com.cn

Product Information

Source

Rabbit

Isotype

IgG

Purification

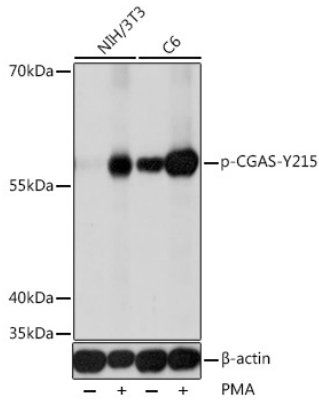
Affinity purification

Storage

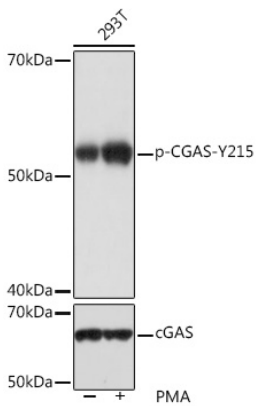
Store at -20°C. Avoid freeze / thaw cycles.

Buffer: PBS with 0.05% proclin300, 50% glycerol, pH7.3.

Validation Data



Western blot analysis of various lysates using Phospho-CGAS-Y215 Rabbit pAb (AP0946) at 1:1000 dilution. NIH/3T3 cells were treated by PMA/TPA (200 nM) at 37°C for 30 minutes after serum-starvation overnight. C6 cells were treated by PMA/TPA (200 nM) at 37°C for 30 minutes after serum-starvation overnight. Secondary antibody: HRP-conjugated Goat anti-Rabbit IgG (H+L) (AS014) at 1:10000 dilution. Lysates/proteins: 25µg per lane. Blocking buffer: 3% BSA. Detection: ECL Basic Kit (RM00020). Exposure time: 1s.



Western blot analysis of lysates from 293T cells, using Phospho-CGAS-Y215 Rabbit pAb (AP0946). 293T cells were treated by PMA/TPA (200 nM) at 37°C for 30 minutes after serum-starvation overnight. Secondary antibody: HRP-conjugated Goat anti-Rabbit IgG (H+L) (AS014) at 1:10000 dilution. Lysates/proteins: 25µg per lane. Blocking buffer: 3% BSA. Detection: ECL Basic Kit (RM00020). Exposure time: 1s.