

# Phospho-IRS1-S1101 Rabbit pAb

Catalog No.: AP0954

## Basic Information

### Observed MW

180kDa

### Calculated MW

132kDa

### Category

Primary antibody

### Applications

ELISA, WB

### Cross-Reactivity

Mouse

## Background

This gene encodes a protein which is phosphorylated by insulin receptor tyrosine kinase. Mutations in this gene are associated with type II diabetes and susceptibility to insulin resistance.

## Recommended Dilutions

WB 1:500 - 1:1000

## Immunogen Information

### Gene ID

3667

### Swiss Prot

P35568

### Immunogen

A synthetic phosphorylated peptide around S1101 of human IRS1 (NP\_005535.1?).

### Synonyms

HIRS-1; Phospho-IRS1-S1101

## Contact

☎ | 400-999-6126

✉ | [cn.market@abclonal.com.cn](mailto:cn.market@abclonal.com.cn)

🌐 | [www.abclonal.com.cn](http://www.abclonal.com.cn)

## Product Information

### Source

Rabbit

### Isotype

IgG

### Purification

Affinity purification

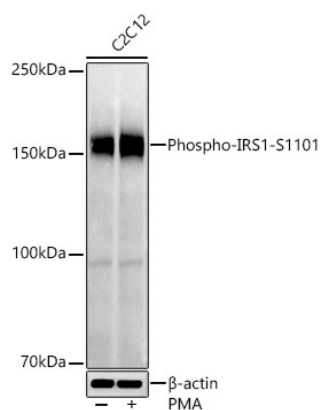
### Storage

Store at -20°C. Avoid freeze / thaw cycles.

Buffer: PBS with 0.01% thimerosal, 50% glycerol, pH7.3.

## Validation Data

---



Western blot analysis of lysates from C2C12 cells, using Phospho-IRS1-S1101 Rabbit pAb (AP0954) at 1:1000 dilution. C2C12 cells were treated by PMA/TPA (200 nM) at 37°C for 30 minutes after serum-starvation overnight.

Secondary antibody: HRP Goat Anti-Rabbit IgG (H+L) (AS014) at 1:10000 dilution.

Lysates/proteins: 25 µg per lane.

Blocking buffer: 3% nonfat dry milk in TBST.

Detection: ECL Basic Kit (RM00020).

Exposure time: 60s.