

Phospho-GAB1-Y307 Rabbit pAb

Catalog No.: AP0961

Basic Information

Observed MW

115kDa

Calculated MW

77kDa

Category

Primary antibody

Applications

WB, ELISA

Cross-Reactivity

Mouse

Background

The protein encoded by this gene is a member of the IRS1-like multisubstrate docking protein family. It is an important mediator of branching tubulogenesis and plays a central role in cellular growth response, transformation and apoptosis. Two transcript variants encoding different isoforms have been found for this gene.

Recommended Dilutions

WB 1:500 - 1:1000

ELISA Recommended starting concentration is 1 µg/mL. Please optimize the concentration based on your specific assay requirements.

Immunogen Information

Gene ID

2549

Swiss Prot

Q13480

Immunogen

Synthetic peptide. This information is considered to be commercially sensitive.

Synonyms

DFNB26; Phospho-GAB1-Y307

Contact

☎ | 400-999-6126

✉ | cn.market@abclonal.com.cn

🌐 | www.abclonal.com.cn

Product Information

Source

Rabbit

Isotype

IgG

Purification

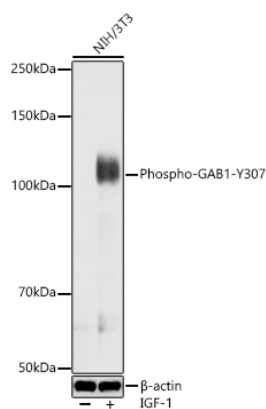
Affinity purification

Storage

Store at -20°C. Avoid freeze / thaw cycles.

Buffer: PBS with 0.01% thimerosal, 50% glycerol, pH7.3.

Validation Data



Western blot analysis of lysates from NIH/3T3 cells using Phospho-GAB1-Y307 Rabbit pAb (AP0961) at 1:1000 dilution. NIH/3T3 cells were treated with IGF-1 (50 ng/ml) at 37°C for 30 minutes after serum-starvation overnight.

Secondary antibody: HRP-conjugated Goat anti-Rabbit IgG (H+L) (AS014) at 1:10000 dilution.

Lysates/proteins: 25 µg per lane.

Blocking buffer: 3% nonfat dry milk in TBST.

Detection: ECL Basic Kit (RM00020).

Exposure time: 60s.