

Phospho-ERK1-T202/Y204 + ERK2-T185/Y187 Rabbit mAb

Catalog No.: AP0974 **Recombinant** **30 Publications**

Basic Information

Observed MW

42kDa/44kDa

Calculated MW

42kDa/44kDa

Category

Primary antibody

Applications

ELISA, WB, IHC-P, IF/ICC

Cross-Reactivity

Human, Mouse, Rat

CloneNo number

ARC1595

Background

The protein encoded by this gene is a member of the MAP kinase family. MAP kinases, also known as extracellular signal-regulated kinases (ERKs), act in a signaling cascade that regulates various cellular processes such as proliferation, differentiation, and cell cycle progression in response to a variety of extracellular signals. This kinase is activated by upstream kinases, resulting in its translocation to the nucleus where it phosphorylates nuclear targets. Alternatively spliced transcript variants encoding different protein isoforms have been described. [provided by RefSeq, Jul 2008]

Recommended Dilutions

WB	1:500 - 1:2000
IHC-P	1:50 - 1:200
IF/ICC	1:50 - 1:200

Immunogen Information

Gene ID

5595/5594

Swiss Prot

P27361/P28482

Immunogen

A synthetic phosphorylated peptide around T202 & Y204 of human ERK1 (P27361).

Synonyms

ERK-1; ERK1; ERT2; HS44KDAP; HUMKER1A; P44ERK1; P44MAPK; PRKM3; p44-ERK1; p44-MAPK; Phospho-ERK1-T202/Y204 + ERK2-T185/Y187

Contact

 | 400-999-6126

 | cn.market@abclonal.com.cn

 | www.abclonal.com.cn

Product Information

Source

Rabbit

Isotype

IgG

Purification

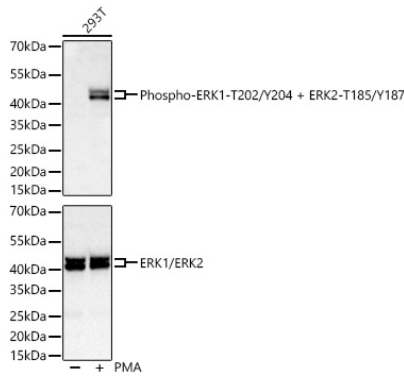
Affinity purification

Storage

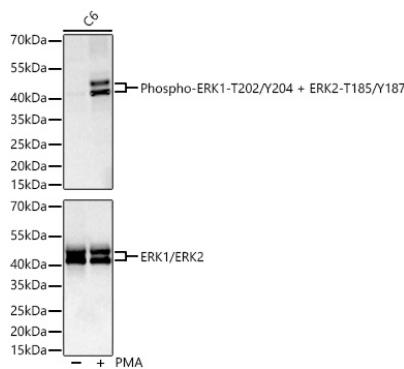
Store at -20°C. Avoid freeze / thaw cycles.

Buffer: PBS with 0.05% proclin300, 0.05% BSA, 50% glycerol, pH7.3.

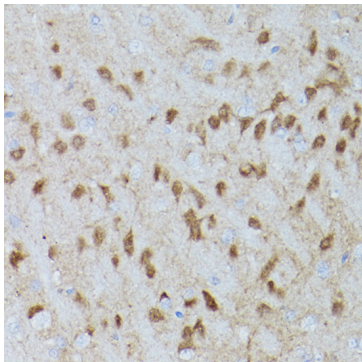
Validation Data



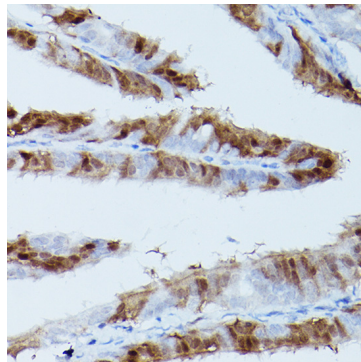
Western blot analysis of lysates from 293T cells using Phospho-ERK1-T202/Y204 + ERK2-T185/Y187 Rabbit mAb (AP0974) at 1:1000 dilution (upper) or ERK1/2 Rabbit mAb (A4782) at 1:3000 dilution (lower) incubated overnight at 4°C. 293T cells were treated by PMA (100 nM) at 37°C for 30 minutes after serum-starvation overnight.
 Secondary antibody: HRP-conjugated Goat anti-Rabbit IgG (H+L) (AS014) at 1:10000 dilution.
 Lysates/proteins: 30 µg per lane.
 Blocking buffer: 3 % nonfat dry milk in TBST.
 Detection: ECL Basic Kit (RM00020).
 Exposure time: 10s.



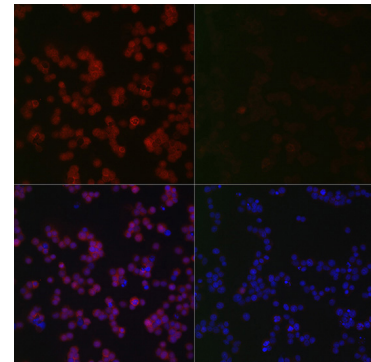
Western blot analysis of lysates from C6 cells using Phospho-ERK1-T202/Y204 + ERK2-T185/Y187 Rabbit mAb (AP0974) at 1:1000 dilution (upper) or ERK1/2 Rabbit mAb (A4782) at 1:3000 dilution (lower) incubated overnight at 4°C. C6 cells were treated by PMA (200 nM) at 37°C for 10 minutes after serum-starvation overnight.
 Secondary antibody: HRP-conjugated Goat anti-Rabbit IgG (H+L) (AS014) at 1:10000 dilution.
 Lysates/proteins: 30 µg per lane.
 Blocking buffer: 3 % nonfat dry milk in TBST.
 Detection: ECL Basic Kit (RM00020).
 Exposure time: 45s.



Immunohistochemistry analysis of paraffin-embedded Rat brain using Phospho-ERK1-T202/Y204 + ERK2-T185/Y187 Rabbit mAb (AP0974) at dilution of 1:100 (40x lens). High pressure antigen retrieval performed with 0.01M Citrate Bufferr (pH 6.0) prior to IHC staining.



Immunohistochemistry analysis of paraffin-embedded Rat fallopian tube using Phospho-ERK1-T202/Y204 + ERK2-T185/Y187 Rabbit mAb (AP0974) at dilution of 1:100 (40x lens). High pressure antigen retrieval performed with 0.01M Citrate Bufferr (pH 6.0) prior to IHC staining.



Immunofluorescence analysis of Jurkat cells (treated with PMA) and Jurkat cells (untreated), using Phospho-ERK1-T202/Y204 + ERK2-T185/Y187 Rabbit mAb (AP0974) at dilution of 1:100 (40x lens). Secondary antibody: Cy3-conjugated Goat anti-Rabbit IgG (H+L) (AS007) at 1:500 dilution. Blue: DAPI for nuclear staining.