

# Phospho-p53-S9 Rabbit mAb

Catalog No.: AP0985 **Recombinant**

## Basic Information

### Observed MW

53kDa

### Calculated MW

44kDa

### Category

Primary antibody

### Applications

ELISA, WB

### Cross-Reactivity

Mouse

### CloneNo number

ARC1529

## Background

This gene encodes a tumor suppressor protein containing transcriptional activation, DNA binding, and oligomerization domains. The encoded protein responds to diverse cellular stresses to regulate expression of target genes, thereby inducing cell cycle arrest, apoptosis, senescence, DNA repair, or changes in metabolism. Mutations in this gene are associated with a variety of human cancers, including hereditary cancers such as Li-Fraumeni syndrome. Alternative splicing of this gene and the use of alternate promoters result in multiple transcript variants and isoforms. Additional isoforms have also been shown to result from the use of alternate translation initiation codons from identical transcript variants (PMIDs: 12032546, 20937277).

## Recommended Dilutions

WB 1:500 - 1:2000

## Immunogen Information

### Gene ID

7157

### Swiss Prot

P04637

### Immunogen

A synthetic phosphorylated peptide around S9 of human p53 (P04637).

### Synonyms

P53; BCC7; LFS1; BMFS5; TRP53; Phospho-p53-S9

## Contact

 | 400-999-6126

 | [cn.market@abclonal.com.cn](mailto:cn.market@abclonal.com.cn)

 | [www.abclonal.com.cn](http://www.abclonal.com.cn)

## Product Information

### Source

Rabbit

### Isotype

IgG

### Purification

Affinity purification

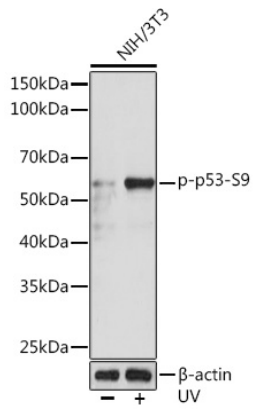
### Storage

Store at -20°C. Avoid freeze / thaw cycles.

Buffer: PBS with 0.02% sodium azide, 0.05% BSA, 50% glycerol, pH7.3.

## Validation Data

---



Western blot analysis of lysates from NIH/3T3 cells, using Phospho-p53-S9 Rabbit mAb (AP0985) at 1:1000 dilution. NIH/3T3 cells were treated by UV at room temperature for 15-30 minutes.

Secondary antibody: HRP-conjugated Goat anti-Rabbit IgG (H+L) (AS014) at 1:10000 dilution.

Lysates/proteins: 25µg per lane.

Blocking buffer: 3% BSA.

Detection: ECL Enhanced Kit (RM00021).

Exposure time: 3min.