

# Phospho-c-Jun-T91 Rabbit mAb

Catalog No.: AP1003 **Recombinant**

## Basic Information

### Observed MW

43kDa

### Calculated MW

36kDa

### Category

Primary antibody

### Applications

ELISA, WB, IHC-P

### Cross-Reactivity

Human, Mouse, Rat

### CloneNo number

ARC1548

## Background

This gene is the putative transforming gene of avian sarcoma virus 17. It encodes a protein which is highly similar to the viral protein, and which interacts directly with specific target DNA sequences to regulate gene expression. This gene is intronless and is mapped to 1p32-p31, a chromosomal region involved in both translocations and deletions in human malignancies.

## Recommended Dilutions

**WB** 1:500 - 1:2000

**IHC-P** 1:50 - 1:200

## Immunogen Information

### Gene ID

3725

### Swiss Prot

P05412

### Immunogen

A synthetic phosphorylated peptide around T91 of human c-Jun (P05412).

### Synonyms

AP1; p39; AP-1; cJUN; c-Jun; Phospho-c-Jun-T91

## Contact

☎ | 400-999-6126

✉ | [cn.market@abclonal.com.cn](mailto:cn.market@abclonal.com.cn)

🌐 | [www.abclonal.com.cn](http://www.abclonal.com.cn)

## Product Information

### Source

Rabbit

### Isotype

IgG

### Purification

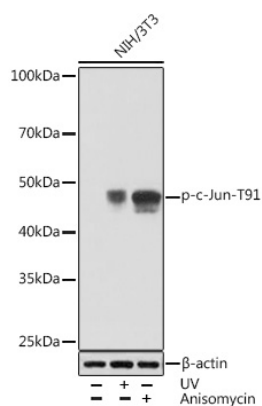
Affinity purification

### Storage

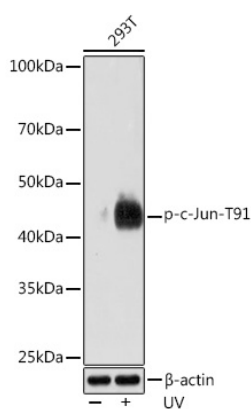
Store at -20°C. Avoid freeze / thaw cycles.

Buffer: PBS with 0.02% sodium azide, 0.05% BSA, 50% glycerol, pH7.3.

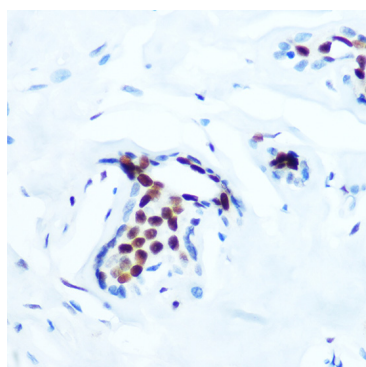
## Validation Data



Western blot analysis of extracts of NIH/3T3 cells, using Phospho-c-Jun-T91 Rabbit mAb (AP1003) at 1:1000 dilution. NIH/3T3 cells were treated by UV at room temperature for 15-30 minutes or treated by Anisomycin (25 µg/mL) at 37°C for 30 minutes. Secondary antibody: HRP Goat Anti-Rabbit IgG (H+L) (AS014) at 1:10000 dilution. Lysates/proteins: 25µg per lane. Blocking buffer: 3% BSA. Detection: ECL Basic Kit (RM00020). Exposure time: 30s.



Western blot analysis of extracts of 293T cells, using Phospho-c-Jun-T91 Rabbit mAb (AP1003) at 1:1000 dilution. 293T cells were treated by UV at room temperature for 15-30 minutes. Secondary antibody: HRP Goat Anti-Rabbit IgG (H+L) (AS014) at 1:10000 dilution. Lysates/proteins: 25µg per lane. Blocking buffer: 3% BSA. Detection: ECL Enhanced Kit (RM00021). Exposure time: 3min.



Immunohistochemistry analysis of paraffin-embedded human breast using Phospho-c-Jun-T91 Rabbit mAb (AP1003) at dilution of 1:100 (40x lens). Perform microwave antigen retrieval with 10 mM Tris/EDTA buffer pH 9.0 before commencing with IHC staining protocol.