

Phospho-CDK2-Y15 Rabbit mAb

Catalog No.: AP1005 **Recombinant** **1 Publications**

Basic Information

Observed MW

34kDa

Calculated MW

34kDa

Category

Primary antibody

Applications

ELISA, WB

Cross-Reactivity

Mouse

CloneNo number

ARC1550

Background

This gene encodes a member of a family of serine/threonine protein kinases that participate in cell cycle regulation. The encoded protein is the catalytic subunit of the cyclin-dependent protein kinase complex, which regulates progression through the cell cycle. Activity of this protein is especially critical during the G1 to S phase transition. This protein associates with and regulated by other subunits of the complex including cyclin A or E, CDK inhibitor p21Cip1 (CDKN1A), and p27Kip1 (CDKN1B). Alternative splicing results in multiple transcript variants.

Recommended Dilutions

WB 1:500 - 1:1000

Immunogen Information

Gene ID

1017

Swiss Prot

P24941

Immunogen

A synthetic phosphorylated peptide around Y15 of human CDK2 (NP_001789.2).

Synonyms

CDKN2; p33(CDK2); Phospho-CDK2-Y15

Contact

☎ | 400-999-6126

✉ | cn.market@abclonal.com.cn

🌐 | www.abclonal.com.cn

Product Information

Source

Rabbit

Isotype

IgG

Purification

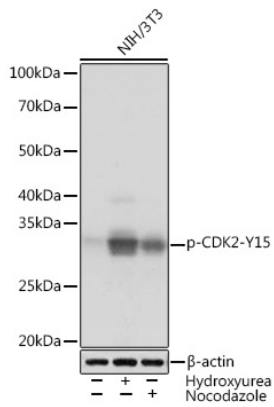
Affinity purification

Storage

Store at -20°C. Avoid freeze / thaw cycles.

Buffer: PBS with 0.02% sodium azide, 0.05% BSA, 50% glycerol, pH7.3.

Validation Data



Western blot analysis of lysates from NIH/3T3 cells, using Phospho-CDK2-Y15 Rabbit mAb (AP1005) at 1:1000 dilution. NIH/3T3 cells were treated by Hydroxyurea (4 Mm) at 37°C for 20 hours or treated by Nocodazole (100 ng/mL) at 37°C for 24 hours.
Secondary antibody: HRP-conjugated Goat anti-Rabbit IgG (H+L) (AS014) at 1:10000 dilution.
Lysates/proteins: 25 μ g per lane.
Blocking buffer: 3% BSA.
Detection: ECL Basic Kit (RM00020).
Exposure time: 3s.