

Phospho-Bad-S112 Rabbit mAb

Catalog No.: AP1010

Recombinant

1 Publications

Basic Information

Observed MW

23kDa

Calculated MW

18kDa

Category

Primary antibody

Applications

ELISA, WB

Cross-Reactivity

Human, Mouse

CloneNo number

ARC1555

Background

The protein encoded by this gene is a member of the BCL-2 family. BCL-2 family members are known to be regulators of programmed cell death. This protein positively regulates cell apoptosis by forming heterodimers with BCL-xL (B-cell lymphoma-extra large) and BCL-2, and reversing their death repressor activity. Proapoptotic activity of this protein is regulated through its phosphorylation. Protein kinases AKT and MAP kinase, as well as protein phosphatase calcineurin were found to be involved in the regulation of this protein. Alternative splicing of this gene results in two transcript variants which encode the same isoform.

Recommended Dilutions

WB 1:500 - 1:2000

Immunogen Information

Gene ID

572

Swiss Prot

Q92934

Immunogen

A synthetic phosphorylated peptide around S112 of human BAD (Q92934).

Synonyms

BBC2; BCL2L8; Phospho-Bad-S112

Contact

☎ | 400-999-6126

✉ | cn.market@abclonal.com.cn

🌐 | www.abclonal.com.cn

Product Information

Source

Rabbit

Isotype

IgG

Purification

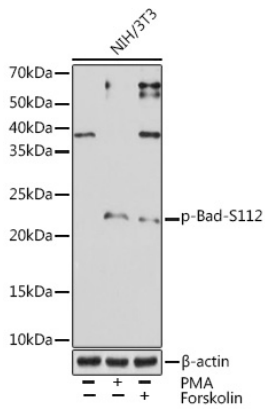
Affinity purification

Storage

Store at -20°C. Avoid freeze / thaw cycles.

Buffer: PBS with 0.02% sodium azide, 0.05% BSA, 50% glycerol, pH7.3.

Validation Data



Western blot analysis of lysates from NIH/3T3 cells, using Phospho-Bad-S112 Rabbit mAb (AP1010) at 1:1000 dilution. NIH/3T3 cells were treated by PMA/TPA (200 nM) at 37°C for 30 minutes after serum-starvation overnight or treated by Forskolin (30 μ M) at 37°C for 30 minutes after serum-starvation overnight.

Secondary antibody: HRP-conjugated Goat anti-Rabbit IgG (H+L) (AS014) at 1:10000 dilution.

Lysates/proteins: 25 μ g per lane.

Blocking buffer: 3% BSA.

Detection: ECL Enhanced Kit (RM00021).

Exposure time: 3min.